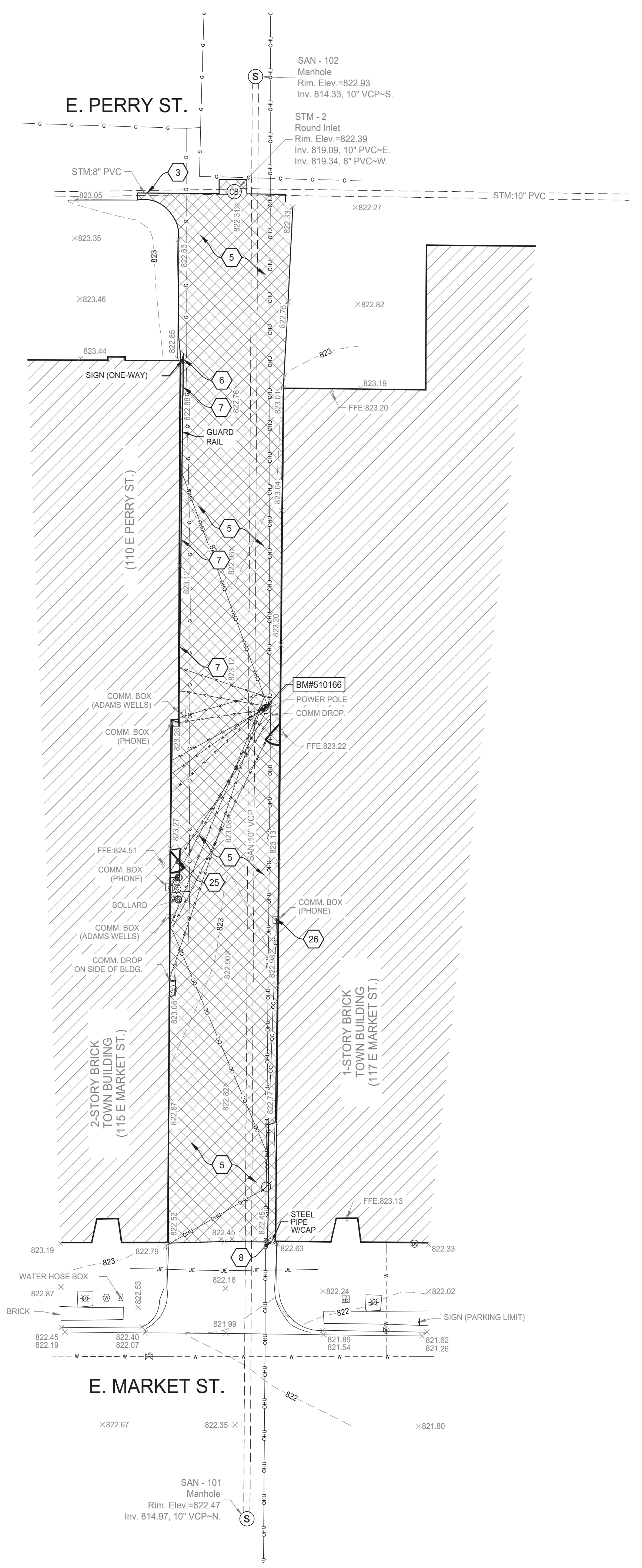


May 19, 2023 8:51 AM
 S:\Projects\Projects (5000-5999)\Projects (5400-5499)\5411-Bluffton Alleyway Improvements\Drawings\5411-C1.0 Site Demo and Layout.dwg



SITE DEMOLITION PLAN - ALLEY 5
 SCALE: 1" = 10'
 NORTH



DEMOLITION LEGEND:

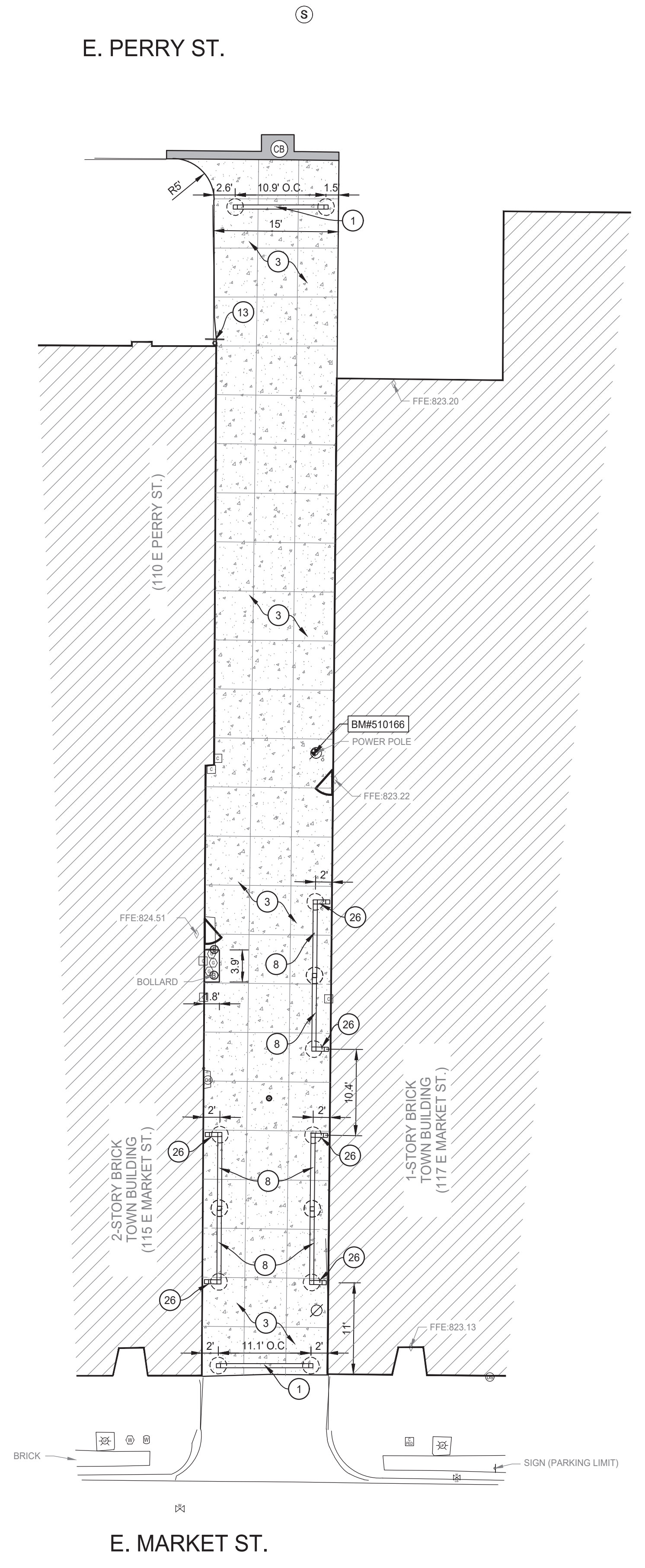
- SAWCUT AND REMOVE ASPHALT PAVEMENT.
- SAWCUT AND REMOVE CONCRETE SIDEWALK, DRIVE, OR SLAB.
- ALTERNATE #1: REMOVE STONE DRIVE. ALTERNATE #2: REMOVE STONE LOT.
- REMOVE CONCRETE CURB.
- REMOVE OR ABANDON UTILITY, AS REQUIRED, FOR NEW CONSTRUCTION. COORDINATE ALL WORK WITH UTILITY OWNER.

DEMOLITION NOTES:

- 1 SAWCUT AND REMOVE CONCRETE SIDEWALK/PAVEMENT.
- 2 SAWCUT AND REMOVE CONCRETE SIDEWALK AT NEAREST JOINT.
- 3 SAWCUT AND REMOVE 12" OF ASPHALT PAVEMENT TO PROVIDE CLEAN EDGE.
- 4 SAWCUT AND REMOVE CONCRETE CURB.
- 5 SAWCUT AND REMOVE ASPHALT PAVEMENT.
- 6 REMOVE AND RELOCATE SIGN.
- 7 REMOVE GUARDRAIL INCLUDING FOUNDATIONS.
- 8 REMOVE STEEL PIPE WITH CAP INCLUDING FOUNDATIONS.
- 9 REMOVE AND REPLACE PARKING BUMPER.
- 10 REMOVE HANDRAIL INCLUDING FOUNDATIONS.
- 11 REMOVE STORM LINE AS NEEDED TO INSTALL NEW STORM STRUCTURE. PROVIDE BYPASS PUMPING IF NEEDED.
- 12 REMOVE STAIRS INCLUDING FOUNDATIONS.
- 13 REMOVE AND REINSTALL LADDER AS NEEDED FOR CONSTRUCTION.
- 14 PROTECT WALL FROM DAMAGE DURING CONSTRUCTION.
- 15 REMOVE AND RELOCATE GREASE DISPOSAL BIN. COORDINATE NEW LOCATION WITH BUILDING OWNER.
- 16 REMOVE BOLLARD INCLUDING FOUNDATIONS.
- 17 REMOVE WATER LINE COORDINATE SHUT DOWN WITH BUILDING OWNER.
- 18 REMOVE POST INCLUDING FOUNDATIONS.
- 19 REMOVE AND RELOCATE WATER METER.
- 20 REMOVE WATER VALVE.
- 21 ALTERNATE #1: REMOVE STONE DRIVE.
- 22 ALTERNATE #2: REMOVE STONE LOT.
- 23 REMOVE SHRUBS, INCLUDING ROOT BALLS.
- 24 SAWCUT AND REMOVE CURB FACE WALK.
- 25 EXISTING CONCRETE STOOP TO REMAIN.
- 26 REMOVE AND RELOCATE COMMUNICATION BOX.

GENERAL NOTES:

1. OBTAIN ALL REQUIRED PERMITS AND COORDINATE INSPECTIONS FROM AUTHORITIES HAVING JURISDICTION.
2. CONTRACTOR SHALL NOT INTERRUPT ANY SERVICE TO ADJACENT PROPERTIES WITHOUT WRITTEN AUTHORIZATION FROM PROPERTY OWNER. AN EMERGENCY PLAN SHALL BE PROVIDED TO THE ENGINEER PRIOR TO CONSTRUCTION TO OUTLINE CORRECTIVE MEASURES IN THE EVENT OF ANY UNAUTHORIZED UTILITY SHUTDOWN.
3. CONTRACTOR SHALL STUDY ALL DRAWINGS PRIOR TO CONSTRUCTION. RESEARCH PUBLIC UTILITY RECORDS, CONTACT THE LOCAL UTILITY LOCATOR SERVICE, AND FIELD VERIFY ALL EXISTING STRUCTURES PRIOR TO CONSTRUCTION. CONTACT ENGINEER FOR DIRECTION IF EXISTING UTILITY CONDITIONS CONFLICT WITH PROPOSED WORK, OR ANY ALTERATIONS SHALL BE THE CONTRACTOR'S RESPONSIBILITY.
4. EXISTING UTILITIES ARE APPROXIMATIONS BASED ON BEST AVAILABLE DATA. CAUTION SHALL BE EXERCISED TO NOT INTERRUPT SERVICE TO ANY BUILDING. EXPLORATORY TRENCH TO VERIFY DEPTH AND LOCATION OF SEWERS PRIOR TO CONSTRUCTION OF NEW SEWER UTILITIES. ASSURE ALL SANITARY FLOW IS DIRECTED INTO THE SANITARY SEWER ON-SITE AND ALL STORM WATER IS DIRECTED INTO THE STORM SEWER SYSTEM.
5. CONTRACTOR IS RESPONSIBLE FOR ALL COORDINATION REQUIRED BY UTILITY OWNERS TO CONSTRUCT PROJECT.
6. PROVIDE RECORD DRAWINGS TO THE OWNER FOR BELOW GRADE IMPROVEMENTS. INCLUDE: MATERIALS OF CONSTRUCTION, SIZE, ELEVATIONS, AND LOCATION DESCRIPTIONS IN THE RECORD. RECORD DRAWINGS SHALL BE CERTIFIED BY A LAND SURVEYOR REGISTERED IN THE STATE OF INDIANA.
7. CONTRACTOR SHALL COORDINATE WITH EACH UTILITY PROVIDER TO DETERMINE TOTAL COST OF SERVICE TO BUILDING AND TO INCLUDE IN THE COST OF THE PROJECT.
8. CONTRACTOR SHALL LOCATE ALL PRIVATE UTILITIES NOT COVERED BY THE PUBLIC LOCATING SERVICE.
9. CONSTRUCTION DE-WATERING AS NECESSARY BY CONTRACTOR.
10. ADJUST ANY EXISTING MANHOLES, VALVES, HYDRANTS, AND HANDHOLES, LOCATED WITHIN PROJECT LIMITS, TO PROPOSED GRADES.
11. CONTRACTOR SHALL SUPPORT AND PROTECT ALL EXISTING UTILITIES DURING CONSTRUCTION OF ADJACENT WORK.
12. SEE SITE SURVEY FOR EXISTING CONDITIONS.
13. COORDINATE ALL DEMOLITION WORK WITH OWNER.
14. CONTRACTOR IS RESPONSIBLE FOR ALL PERMIT FEES, TAPPING FEES, INSPECTION FEES, ETC.



SITE LAYOUT PLAN - ALLEY 5
 SCALE: 1" = 10'
 NORTH

LAYOUT LEGEND:

- TYPE "A" PAVEMENT PER DETAIL #1/C3.1.
- 6" COLORED CONCRETE PAVEMENT PER DETAILS #3/C3.1 & #5/C3.1.
- CONCRETE UNIT PAVERS PER DETAIL #4/C3.1.
- 6" CONCRETE PAVEMENT PER DETAILS #2/C3.1 & #5/C3.1.

NOTE: ALL DIMENSIONS ARE TO FACE OF CURB OR EDGE OF PAVEMENT UNLESS NOTED OTHERWISE.

PROPOSED LEGEND:

- SIGN
- LIGHT POLE

LAYOUT NOTES:

- 1 ENTRY SIGN PER DETAILS #22/C3.1 AND #29/C3.1.
- 2 FOR REFERENCE ONLY. POLE FOR LIGHTING. SEE SITE ELECTRICAL DRAWINGS.
- 3 6" CONCRETE PER DETAILS #2/C3.1 & #5/C3.1.
- 4 CURB FACE WALK PER DETAILS #5/C3.1 & #7/C3.1.
- 5 PAVEMENT MARKING SHALL BE 4" WHITE WATERBORNE PAINT.
- 6 LANDFORMS SORELLA FREESTANDING PLANTER 30"x30"x30" WITH DRAINHOLES AND WITH BRONZE POWDERCOATED METAL FINISH OR APPROVED EQUAL. COORDINATE LOCATION WITH OWNER.
- 7 SCREEN WALL PER DETAILS #23/C3.1 AND #28/C3.1.
- 8 ART DISPLAY WALL PER DETAILS #24/C3.1 AND #25/C3.1.
- 9 CURB RAMP TYPE "T" PER DETAIL #17/C3.1.
- 10 DOWELED JOINT PER DETAIL #8/C3.1.
- 11 SEAT WALL PER DETAIL #21/C3.1.
- 12 CONCRETE PARKING BUMPER PER DETAIL #9/C3.1.
- 13 RELOCATED "ONE WAY" SIGN PER DETAIL #17/C3.1.
- 14 6" VERTICAL CURB PER DETAIL #19/C3.1.
- 15 CONCRETE STAIRS PER DETAIL #10/C3.1.
- 16 "NO PARKING - LOADING ZONE" (R7-6) SIGN PER DETAIL #8/C3.2.
- 17 SCREEN WALL RETURN PER DETAILS #25/C3.1 AND #27/C3.1.
- 18 RETAINING WALL PER DETAIL #20/C3.1.
- 19 ALL PLANTING BEDS SHALL HAVE 3" OF HARDWOOD SHREDDED MULCH.
- 20 ALTERNATE #1: EXPANSION JOINT.
- 21 ALTERNATE #2: EXPANSION JOINT.
- 22 PROVIDE IN ALL RAISED PLANTER BEDS A MINIMUM OF 24" DEEP PLANTING SOIL MIXTURE COMPRISED OF 60% TOP SOIL, 20% PEAT AND 20% SAND FOR THE ENTIRE PLANTING BED.
- 23 CONCRETE RAMP PER DETAIL #4/C3.2.
- 24 DETECTABLE SCORE LINES PER DETAIL #7/C3.2.
- 25 RELOCATED "PEDESTRIAN CROSSING" SIGN PER DETAIL #8/C3.2.
- 26 ART DISPLAY WALL RETURN PER DETAILS #5/C3.2 AND #6/C3.2.
- 27 INSTALL SHRUBS PER PLANTING DETAIL #11/C3.2.
- 28 INSTALL ORNAMENTAL GRASSES PER PLANTING DETAIL #2/C3.2.
- 29 INSTALL PERENNIALS PER PLANTING DETAIL #3/C3.2.
- 30 IF A DISCREPANCY IS FOUND BETWEEN THE QUANTITIES SHOWN ON THE PLANT LIST AND ON THE PLANTING PLAN, THEN THE PLANTING PLAN SHALL TAKE PRECEDENCE.
- 31 ONLY DELIVER PLANTS TO THE SITE WHEN PLANTING IS READY TO BEGIN. IF A DELAY ARISES OF MORE THAN 8 HOURS, MOVE PLANTS FROM PROPERTY TO A SHADED PROTECTED SITE, AND KEEP ROOTS MOIST. ALSO, ENSURE THE PLANTS ARE PROTECTED FROM MECHANICAL DAMAGE.

PROJECT ALTERNATES:

- ALLEY 2 ALTERNATE #1: CONCRETE PAVEMENT REPLACING EXISTING STONE LOT FROM PERRY ST. TO BUILDING.
- ALLEY 4 ALTERNATE #2: CONCRETE PAVEMENT REPLACING EXISTING STONE PARKING LOT.

The concepts, ideas, designs, plans and details shown on this document are the sole property of Engineering Resources, Inc. and were created, developed, and presented for use on this specific project. None of the concepts, ideas, designs, plans, or details shall be used, or dissemination of any data herein may be made without the written permission of Engineering Resources, Inc.

Bluffton NOW
Downtown Pathways Project
 Bluffton, Indiana, 46714



ERI PROJECT NUMBER: 5411

ISSUE DATE: 05.19.2023

PROGRESS SET

REVISIONS

NO.	DATE	DESCRIPTION

SITE DEMOLITION & LAYOUT PLAN - ALLEY #5

C1.5



STORM SEWER NOTES:

- MATERIAL AND WORKMANSHIP SHALL COMPLY WITH THE CITY OF BLUFFTON STANDARDS AND SPECIFICATIONS.
- ALL PIPE 12" AND SMALLER SHALL BE SDR 35 PVC, OR ADS N-12 HDPE UNLESS OTHERWISE NOTED. ALL PIPE LARGER THAN 12" SHALL BE ADS N-12 HDPE OR C76 CL-111 RCP UNLESS OTHERWISE NOTED. ALL PIPE SHALL BE INSTALLED ACCORDING TO SPECIFICATIONS AND PIPE TRENCH DETAIL #10C3.1.
- MAINTAIN 10'-0" MINIMUM HORIZONTAL AND 18" MINIMUM VERTICAL SEPARATION BETWEEN ALL SEWER PIPING AND POTABLE WATER PIPING. WHEN MINIMUM TOLERANCES CANNOT BE MAINTAINED, USE WATERWORKS GRADE PIPE AND FITTINGS OF MATERIAL SELECTED.
- COORDINATE TAP LOCATIONS FOR ROOF DRAINS WITH BUILDING PLUMBING DRAWINGS. ASSURE ALL REQUIRED FITTINGS ARE INSTALLED ON THE MAIN LINE PRIOR TO BACKFILLING. INCLUDE ADAPTER FITTING FOR DOWNSPOUTS.
- ALL UNDERGROUND PIPING FOR DOWNSPOUT COLLECTION SYSTEM SHALL BE 6" SDR 35 PVC STORM @ 1.00% MIN. SLOPE UNLESS NOTED OTHERWISE.

WATER MAIN NOTES:

- WATER TO BE SUPPLIED BY THE CITY OF ANGOLA WATER UTILITY.
- WATER MAINS SHALL BE INSTALLED ACCORDING TO CITY OF ANGOLA STANDARDS AND SPECIFICATIONS.
- THE WATER MAIN IS TO BE INSTALLED WITH A MINIMUM COVER OF 5'-0"
- WHERE SANITARY AND/OR STORM SEWER(S) AND WATER MAIN CROSS, ONE FULL LENGTH OF WATER MAIN SHALL BE CENTERED OVER THE SANITARY AND/OR STORM SEWER, AND THE VERTICAL DISTANCE TO BE A MINIMUM OF 18 INCHES. WHERE WATER LINES AND SEWER CROSS AND THE CLEARANCE CANNOT BE MAINTAINED, THE SEWER MUST BE CONSTRUCTED OF WATERWORKS GRADE DUCTILE IRON PIPE WITH MECHANICAL JOINTS OF SDR 21 PVC PRESSURE SEWER PIPE WITH COMPRESSION FITTINGS WITHIN TEN FEET OF THE WATER LINE.
- WHERE A WATER MAIN CROSSES UNDER A SEWER, THE MAIN SHALL USE 2" ELBOWS TO MINIMIZE THE LENGTH OF WATER MAIN INSTALLED IN EXCESS OF 5.0 FEET COVER.
- THE MINIMUM HORIZONTAL DISTANCE BETWEEN THE WATER MAIN AND THE STORM OR SANITARY SEWER MAIN IS 10.0 FEET.
- ALL TEES, CROSSES, BENDS, AND ELBOWS EXCEEDING 11 1/2" SHALL BE RESTRAINED.
- WATER SERVICE TO BE DUCTILE IRON TO MEET BUILDING, MECHANICAL, AND LOCAL UTILITY REQUIREMENTS AND CODES. FOR MATERIAL AND JOINTS.
- ALL PIPE JOINTS SHALL BE IN ACCORDANCE WITH ANSI SPECIFICATIONS OF A21.11 (AWWA C-11).
- ALL MATERIALS ARE CERTIFIED IN ACCORDANCE WITH THE AMERICAN NATIONAL STANDARDS INSTITUTE (ANSI) NATIONAL SANITATION FOUNDATION (NSF) INTERNATIONAL STANDARD 61.
- ALL WATER MAINS AND THEIR ACCESSORIES SHALL BE INSTALLED AND PRESSURE AND LEAK TESTED IN ACCORDANCE WITH THE APPLICABLE PROVISIONS OF AWWA STANDARD C600-93, C602-89, C603-90, C605-94, OF C606-87.
- THE CONTRACTOR SHALL GUARANTEE THE INSTALLATION FOR ONE YEAR FROM THE DATE OF SUBSTANTIAL COMPLETION.
- ALL WORK TO CONFORM TO STATE AND LOCAL PLUMBING BACKFLOW PREVENTION CODES AND THE SPECIFICATIONS OF THE MARION WATER UTILITY PER STATE CODE. BACKFLOW DEVICES ARE TO BE TESTED UPON INSTALLATION AND THEN PERIODICALLY THEREAFTER. SUBMIT COPIES OF TESTS TO THE ITY ENGINEERING DEPARTMENT.
- VACUUM BREAKERS MUST BE INSTALLED ON ALL EXISTING OR PROPOSED HOSE BIBBS, MOP/SERVICE SINKS, WALL/YARD HYDRANTS.
- ALL PIPE SHALL BE INSTALLED ACCORDING TO SPECIFICATIONS AND PIPE TRENCH DETAIL #11C3.1.

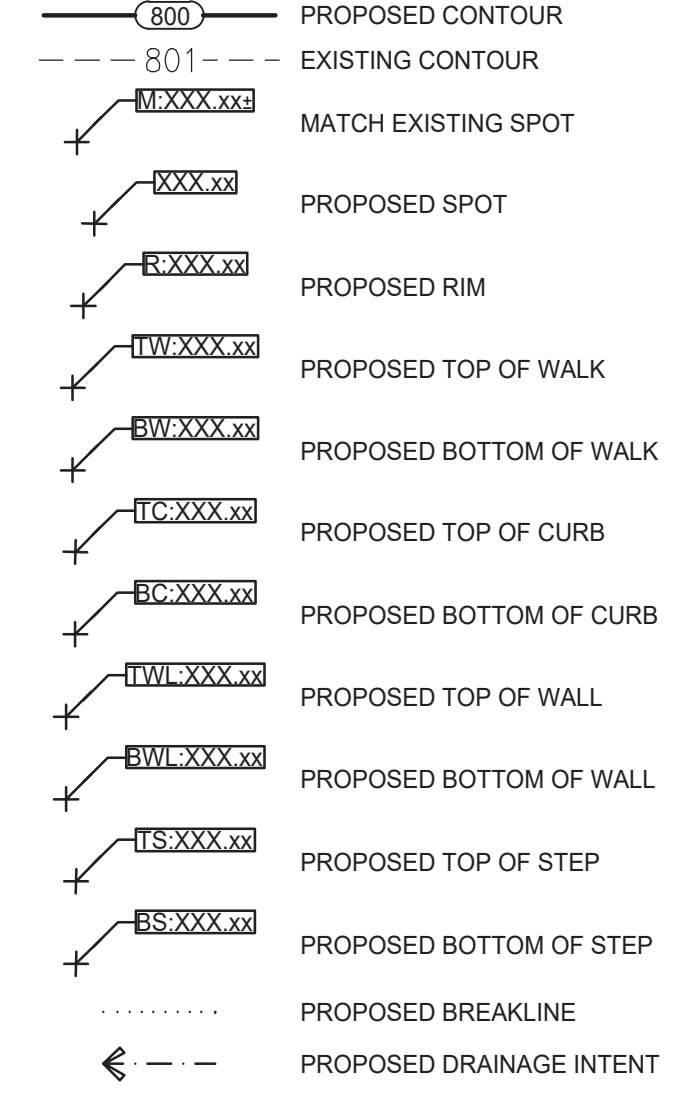
UTILITY NOTES:

- 6" DOWNSPOUT DRAIN @ MINIMUM 1.00% CONNECT TO DOWNSPOUTS AND PROVIDE ADAPTOR FITTINGS AS NECESSARY.
- CONTRACTOR TO CORE HOLE IN EXISTING STRUCTURE FOR PROPOSED STORM SEWER CONNECTION. PROVIDE WATERTIGHT CONNECTION PER DETAIL #16C3.1.
- FIELD VERIFY DEPTH AND LOCATION OF EXISTING UTILITY. NOTIFY ENGINEER AND WAIT FOR INSTRUCTION IF CONFLICTS WITH PROPOSED CONSTRUCTION.
- WATER LINE PER UTILITY LOCATE. SIZE UNKNOWN. CONTRACTOR TO REMOVE AND REPLACE EXISTING WATER WITHIN PROJECT LIMITS.
- RELOCATED WATER METER.
- GATE VALVE.

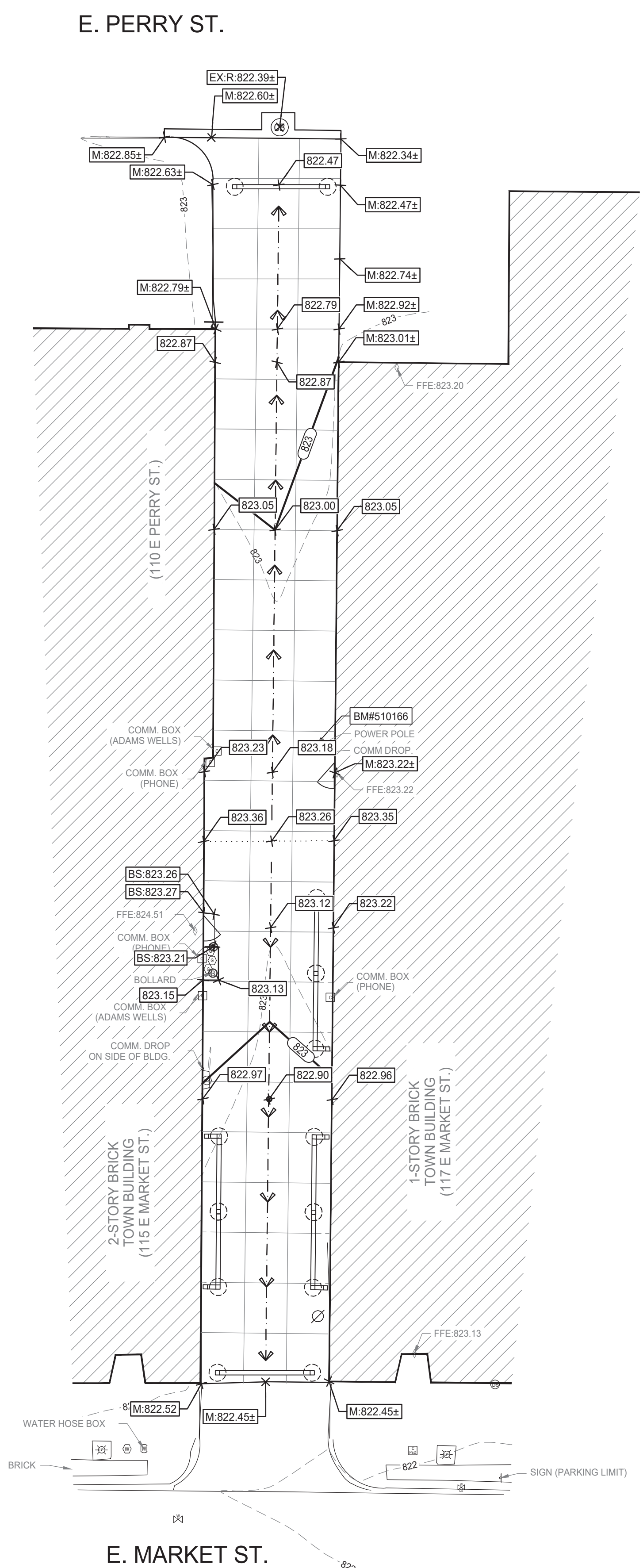
PROPOSED LEGEND:



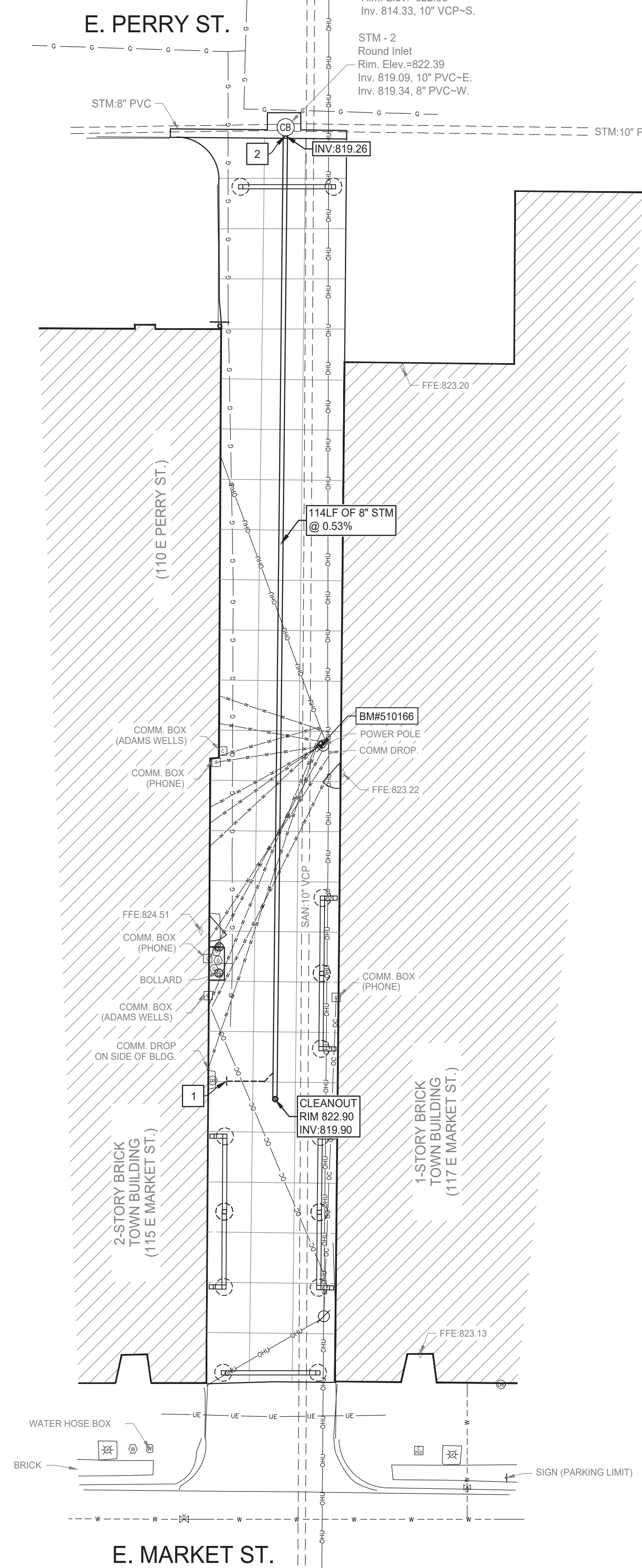
GRADING LEGEND:



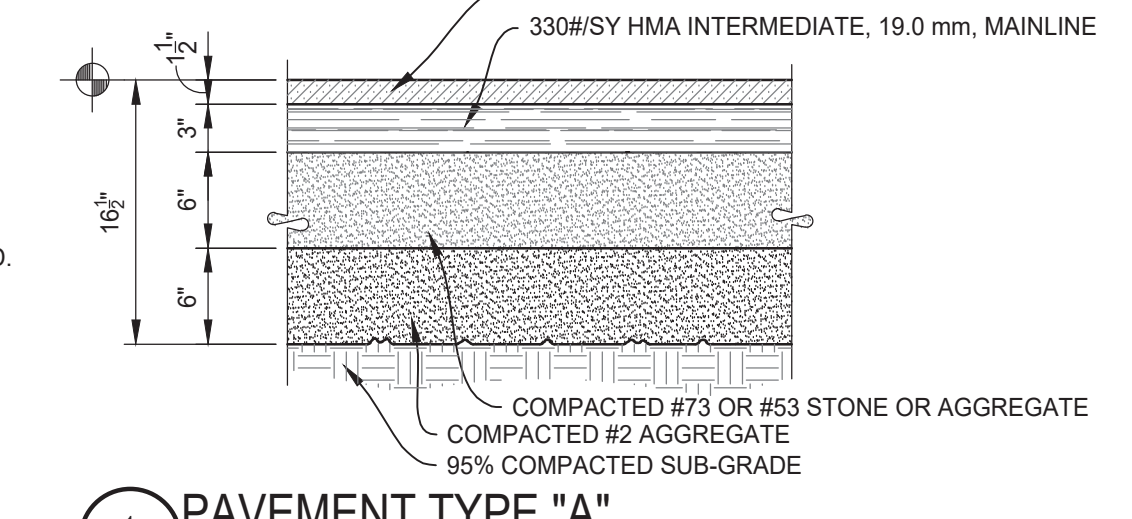
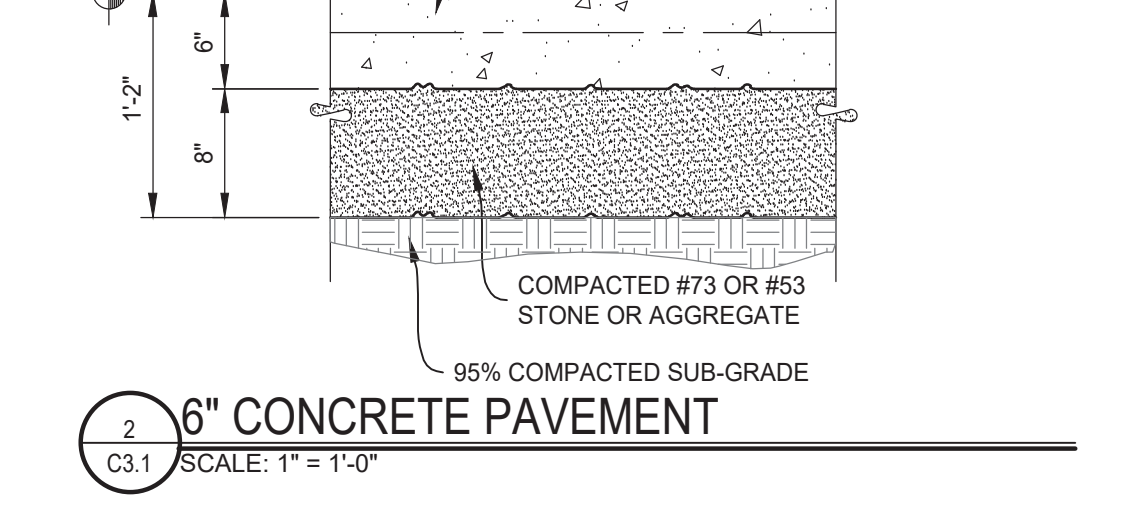
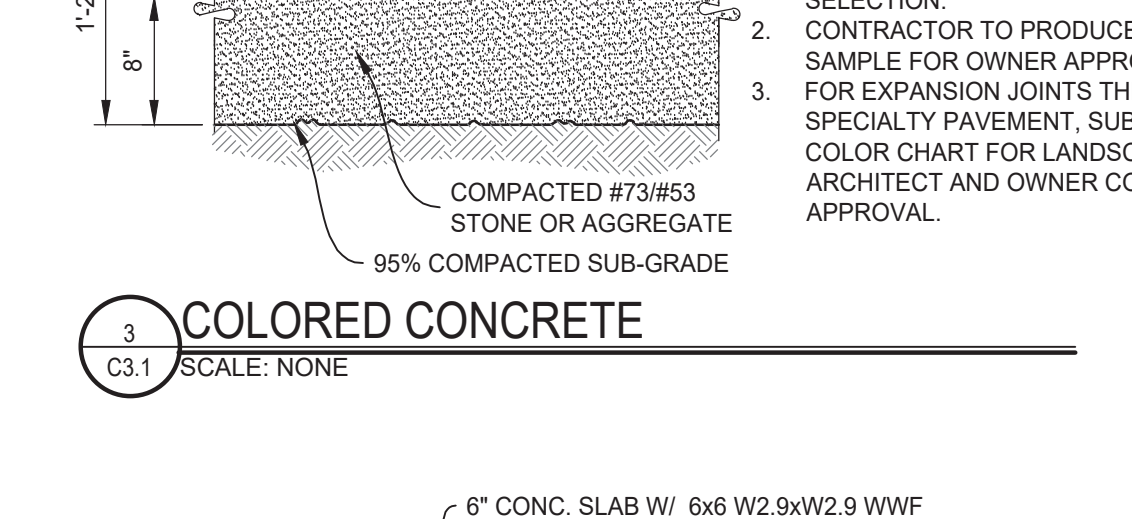
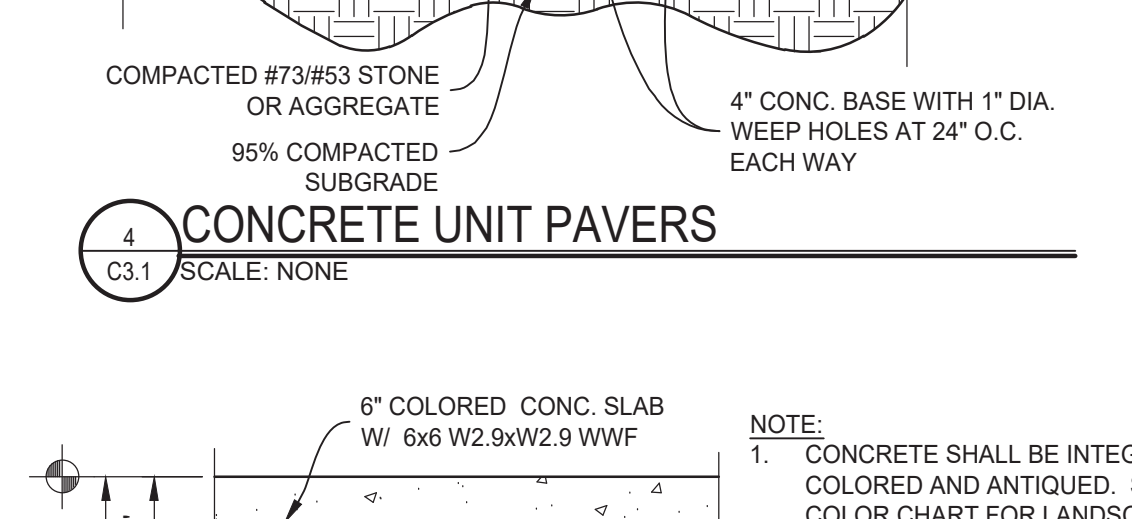
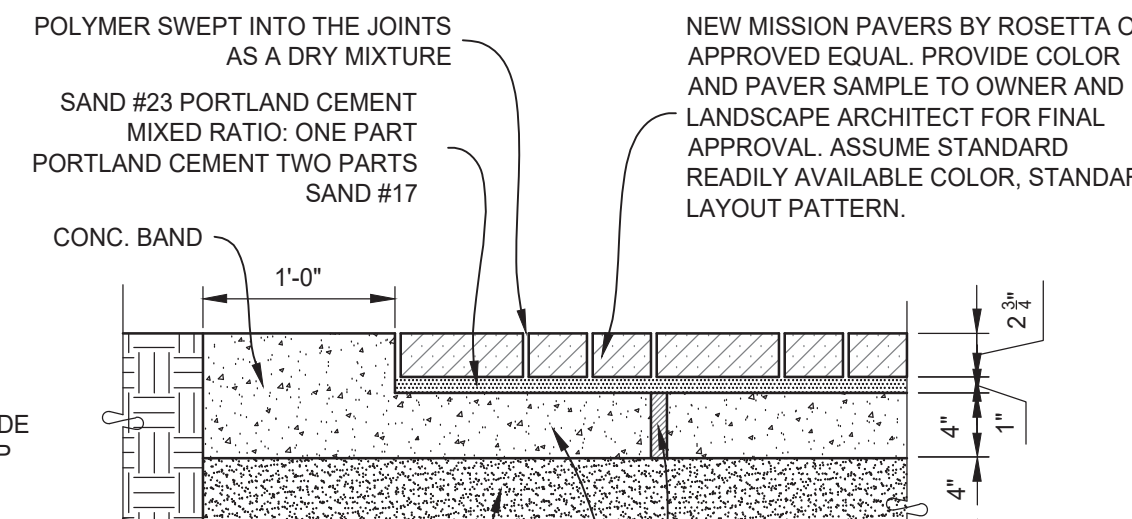
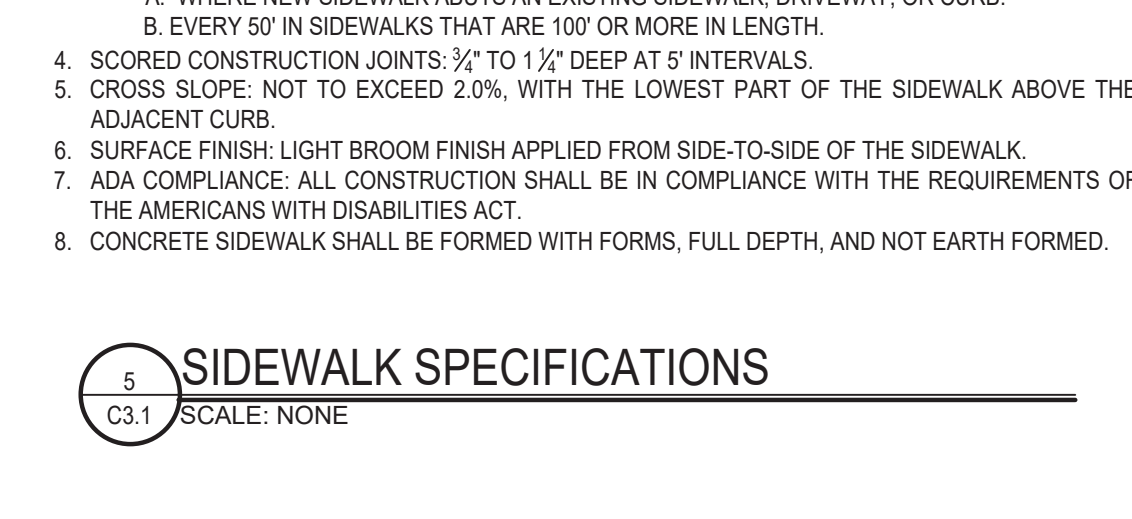
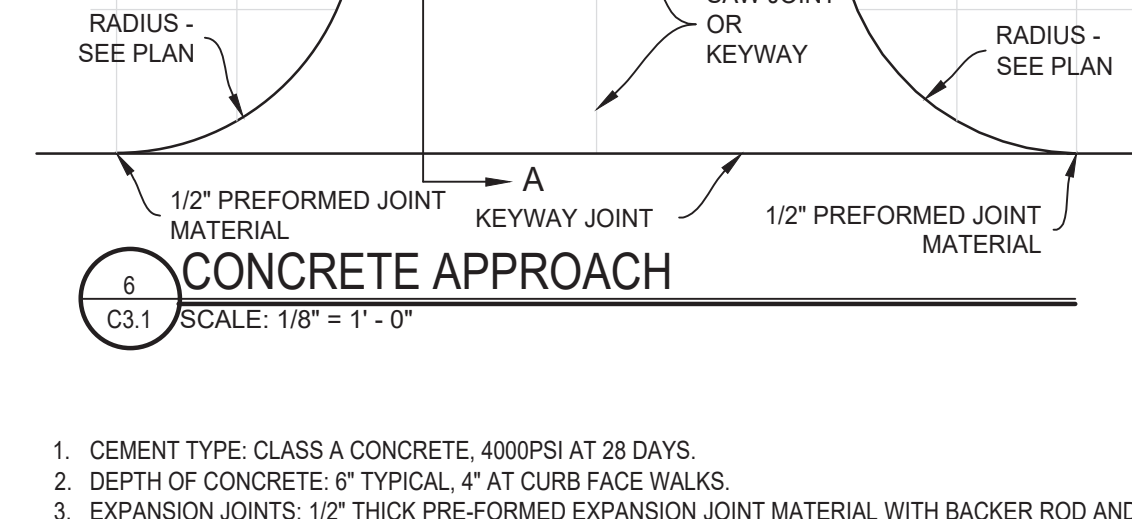
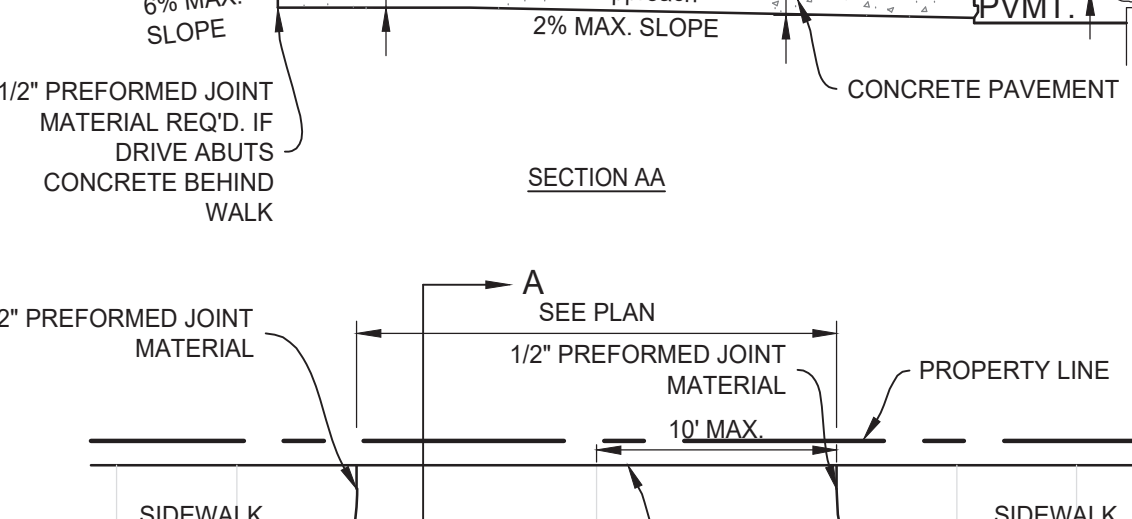
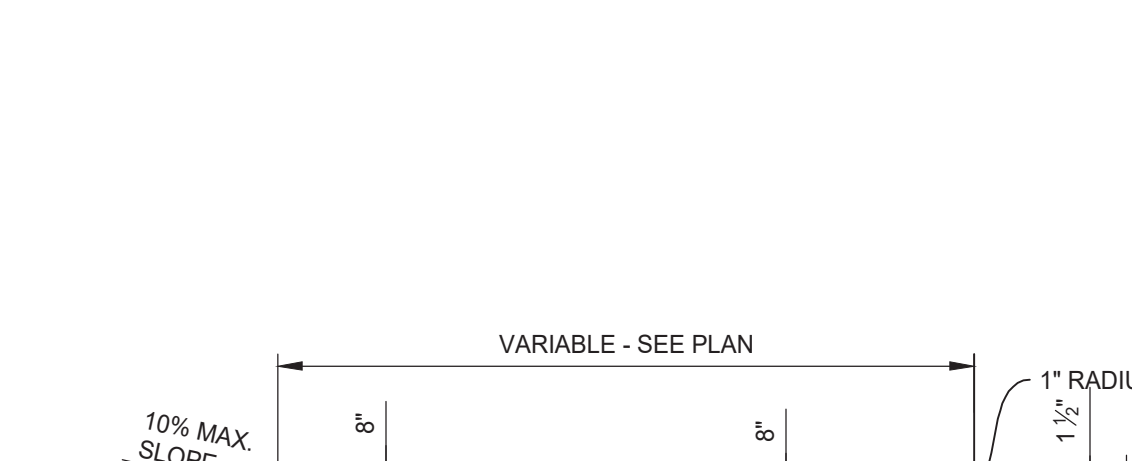
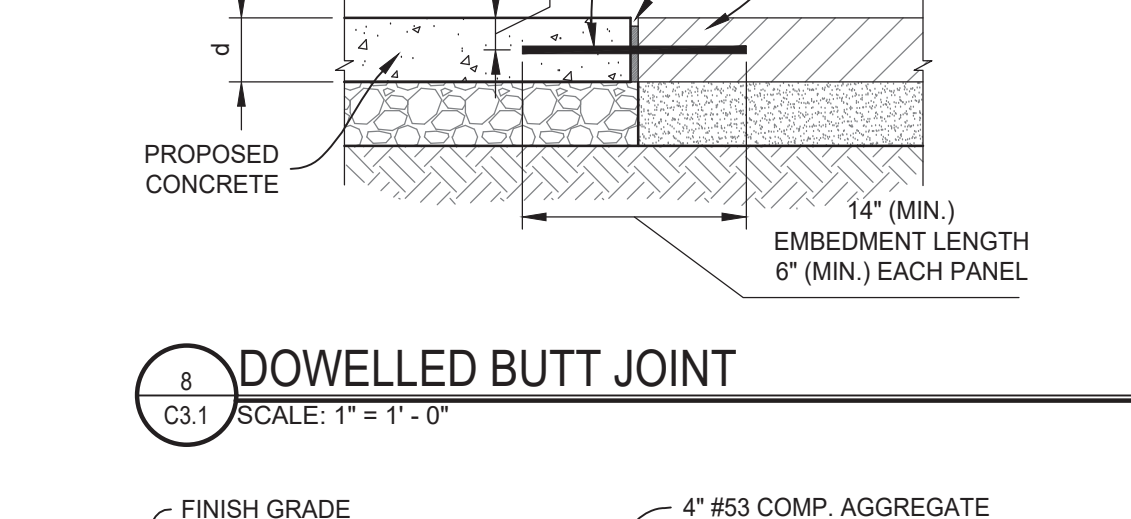
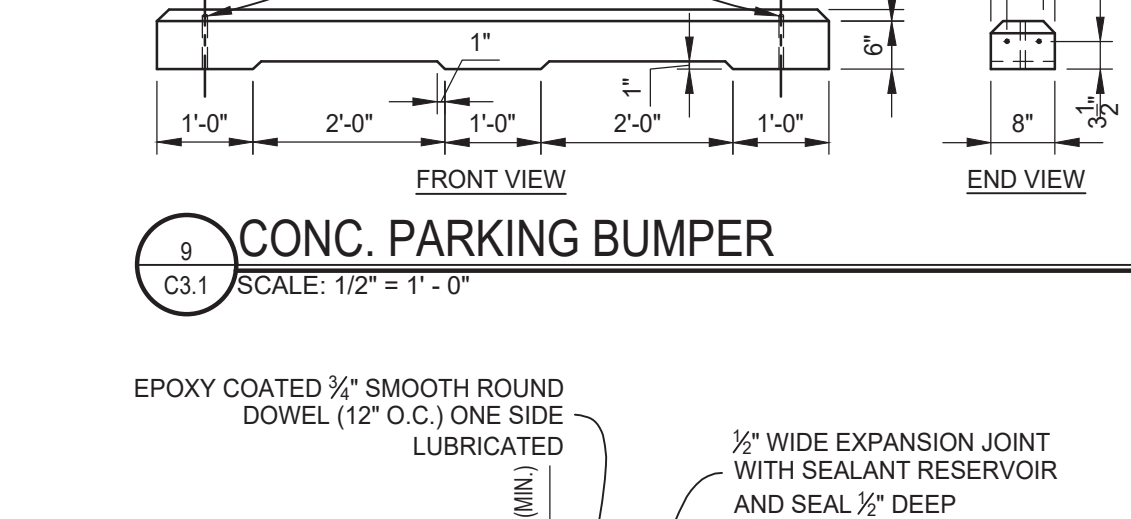
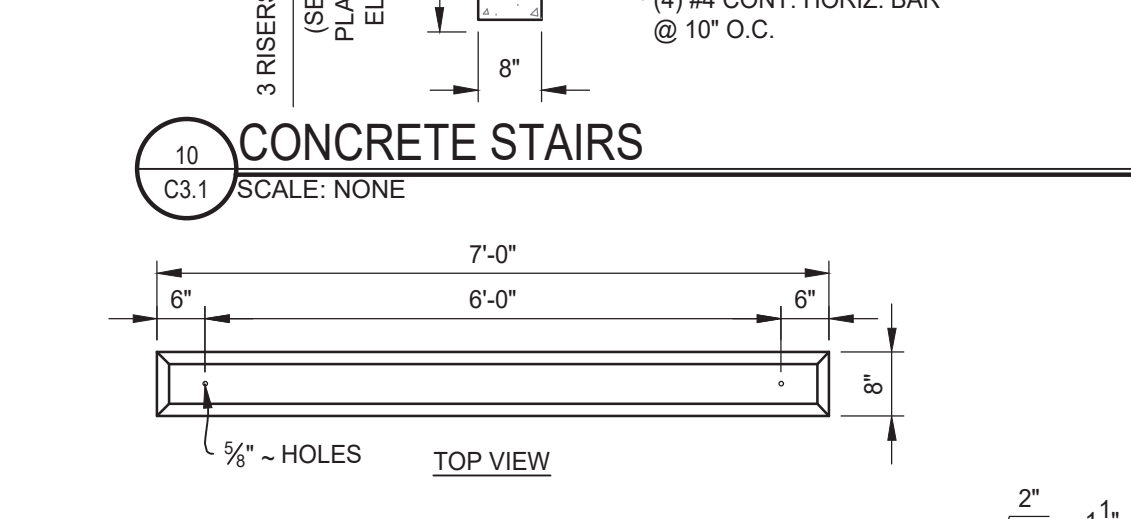
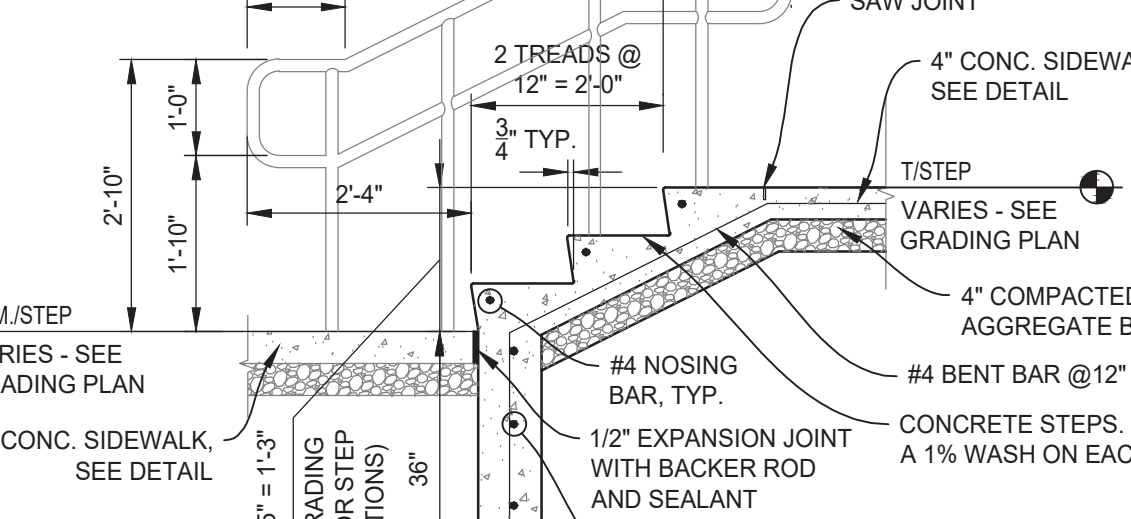
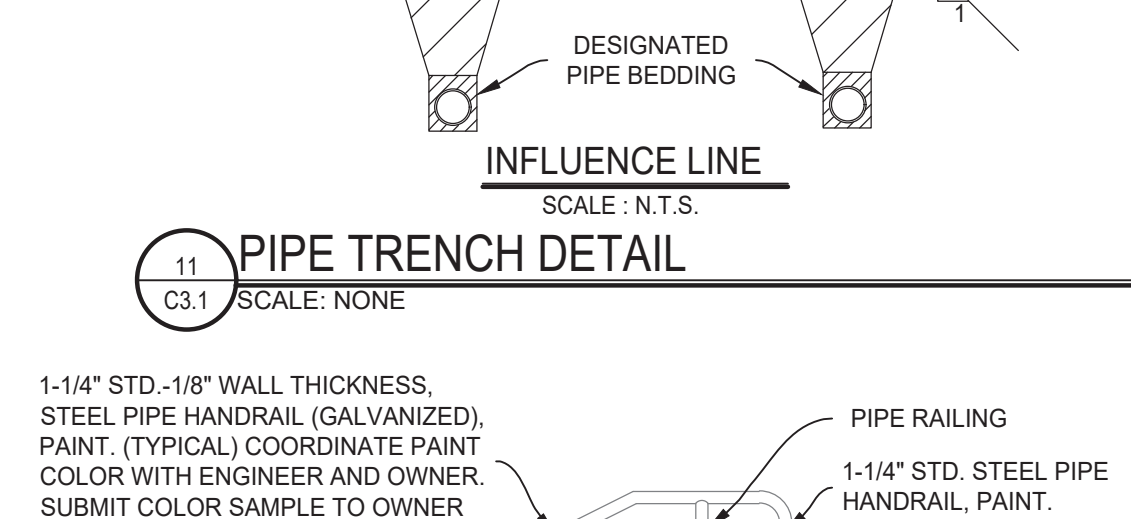
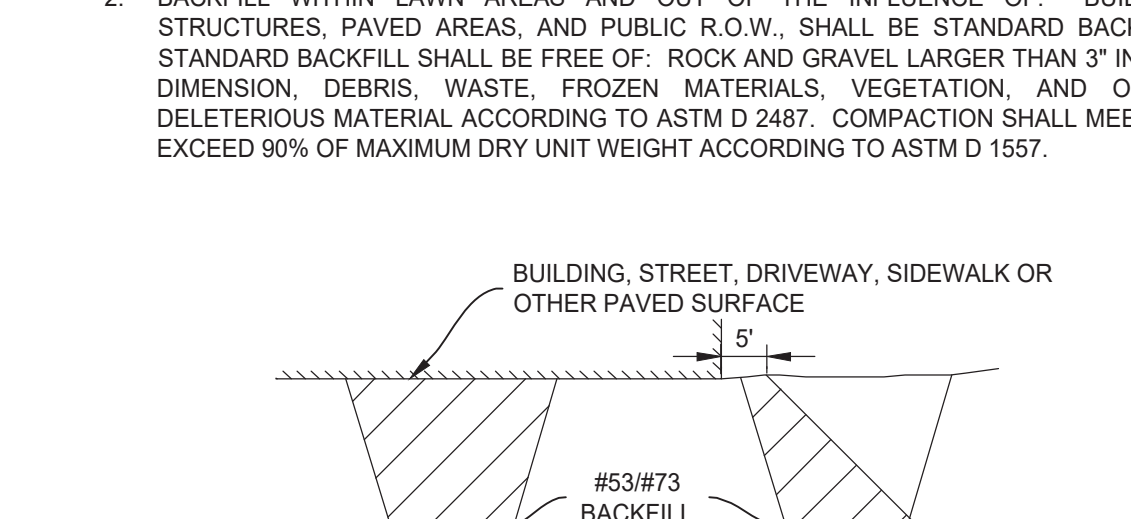
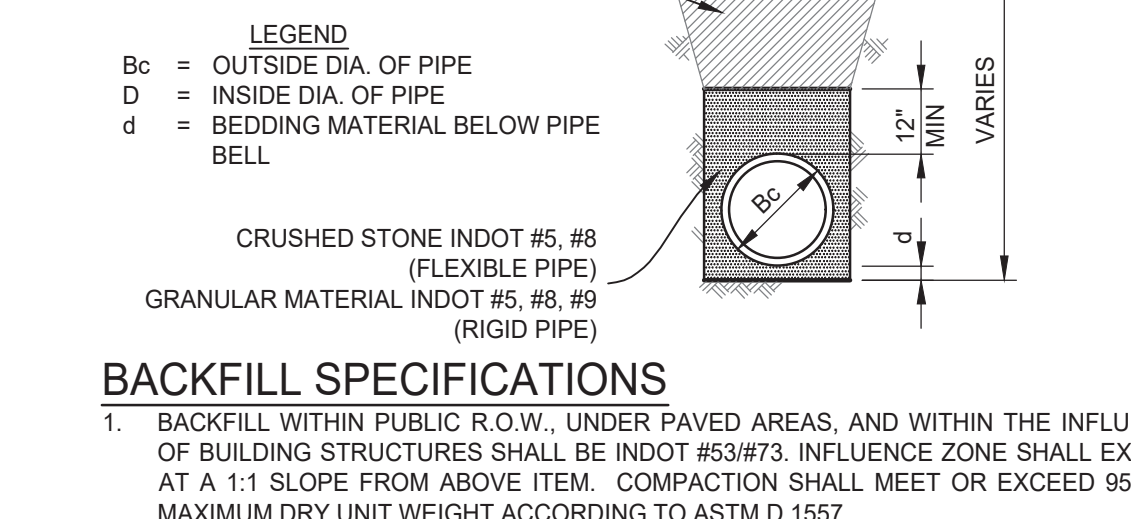
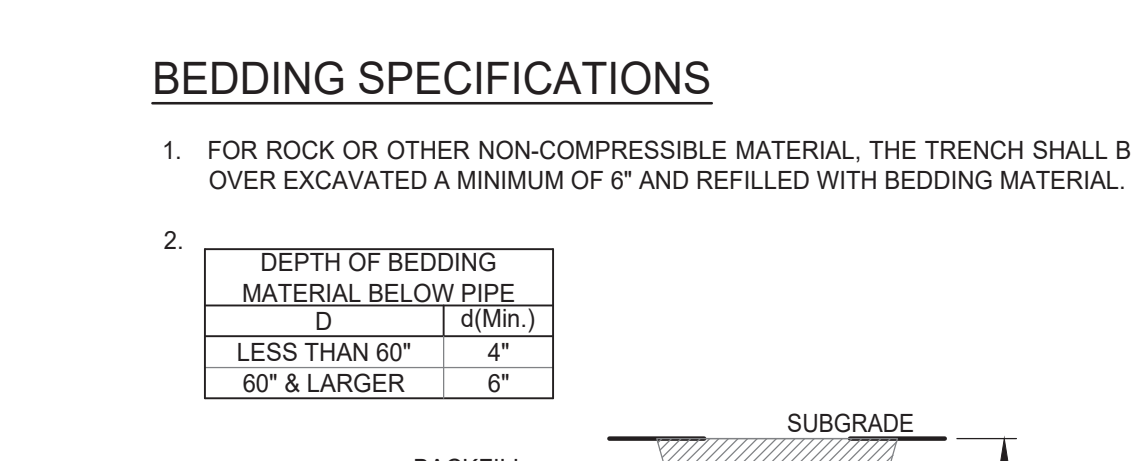
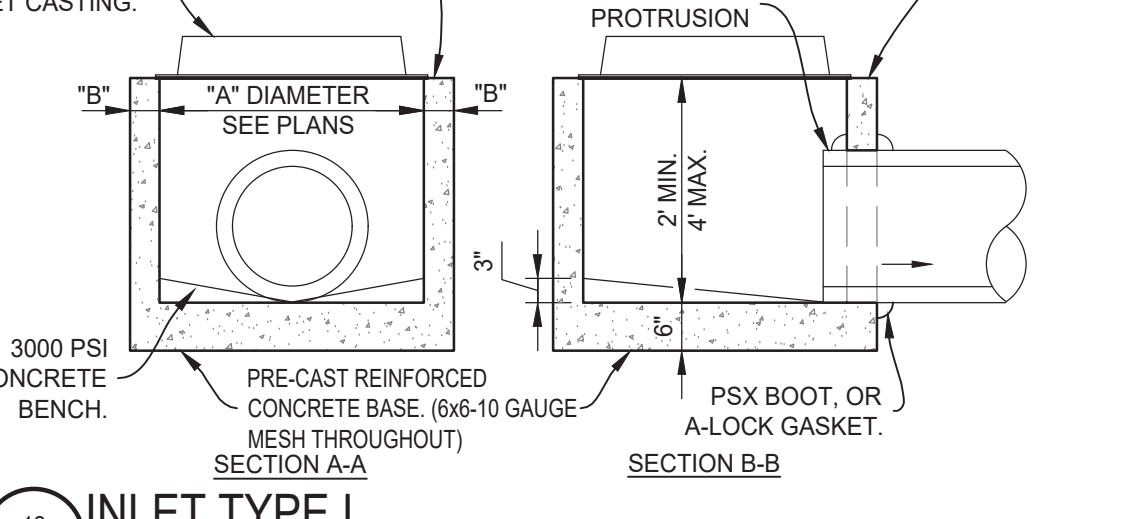
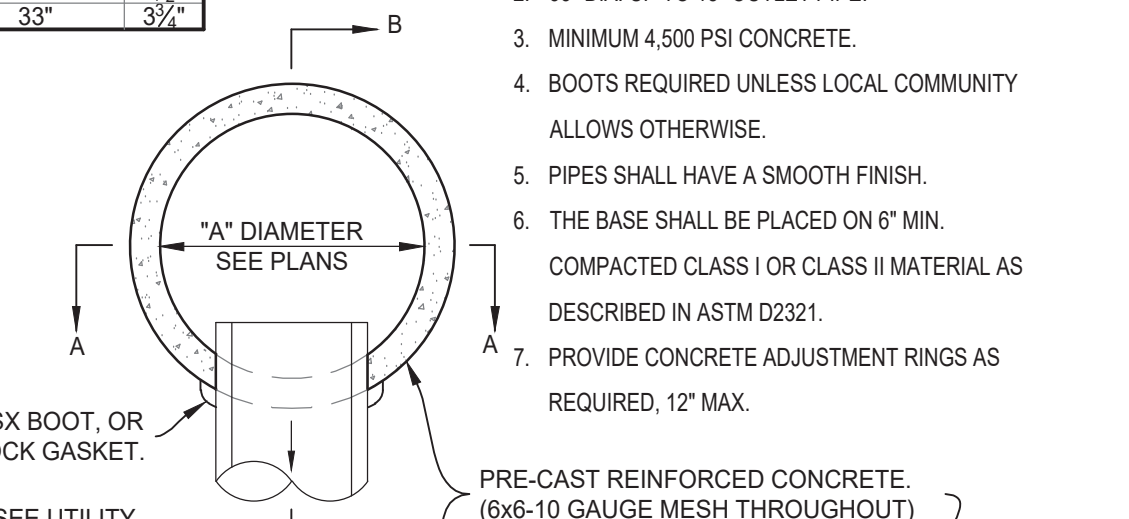
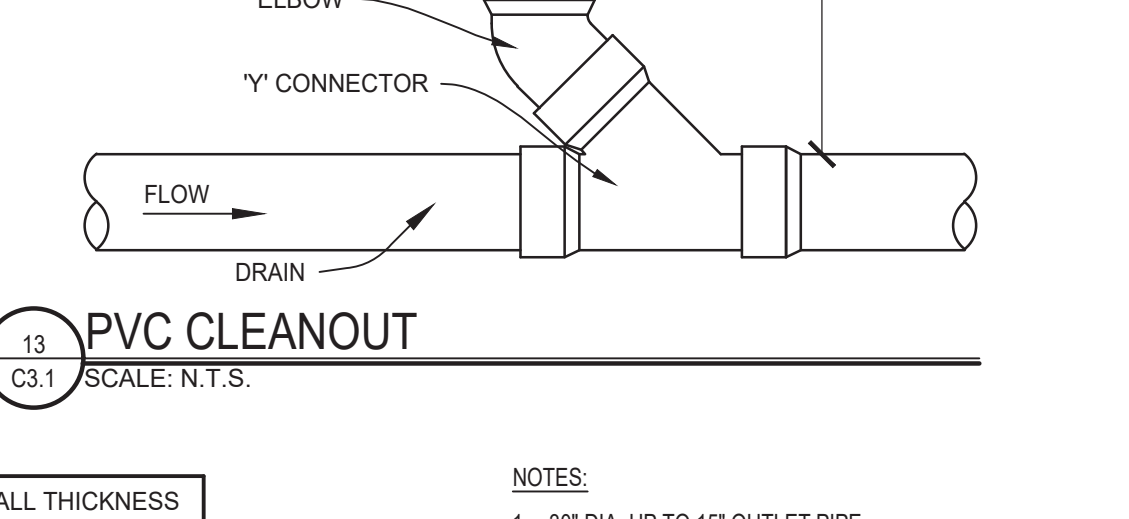
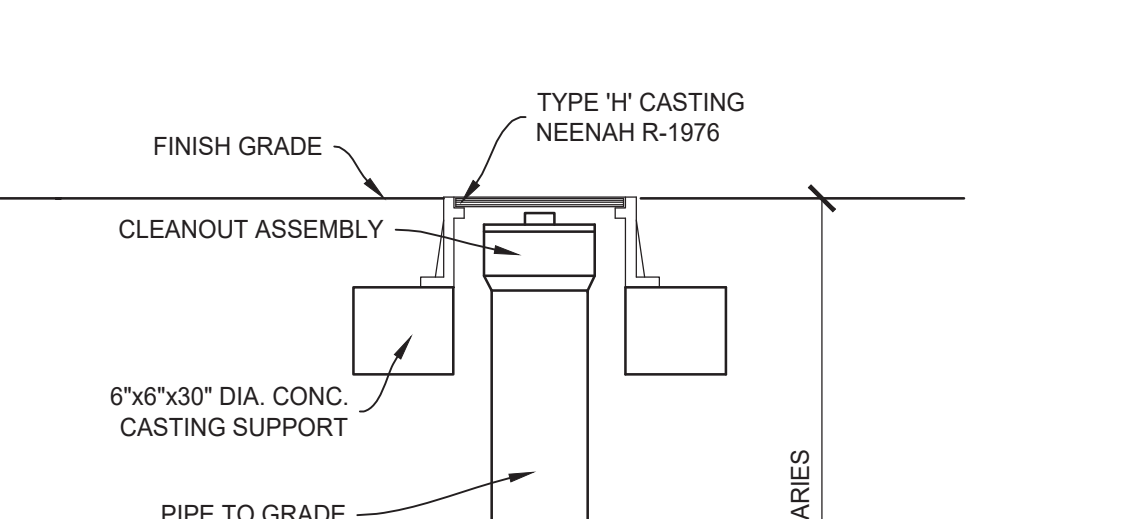
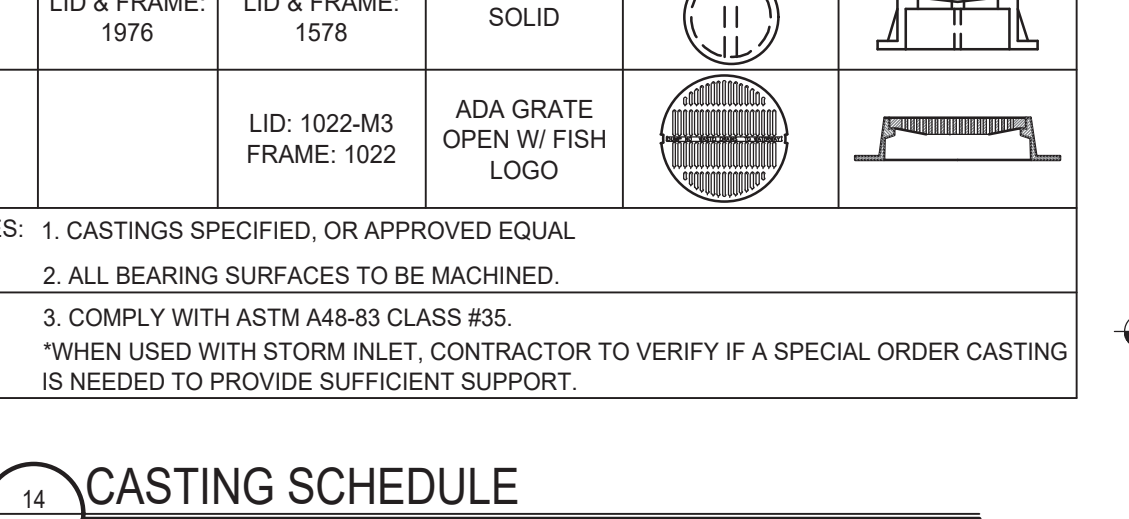
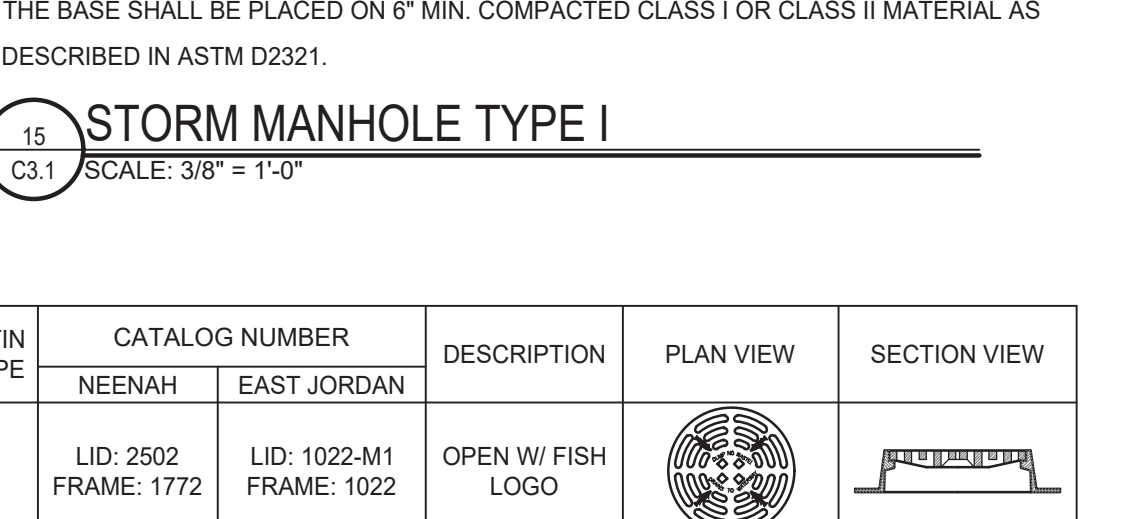
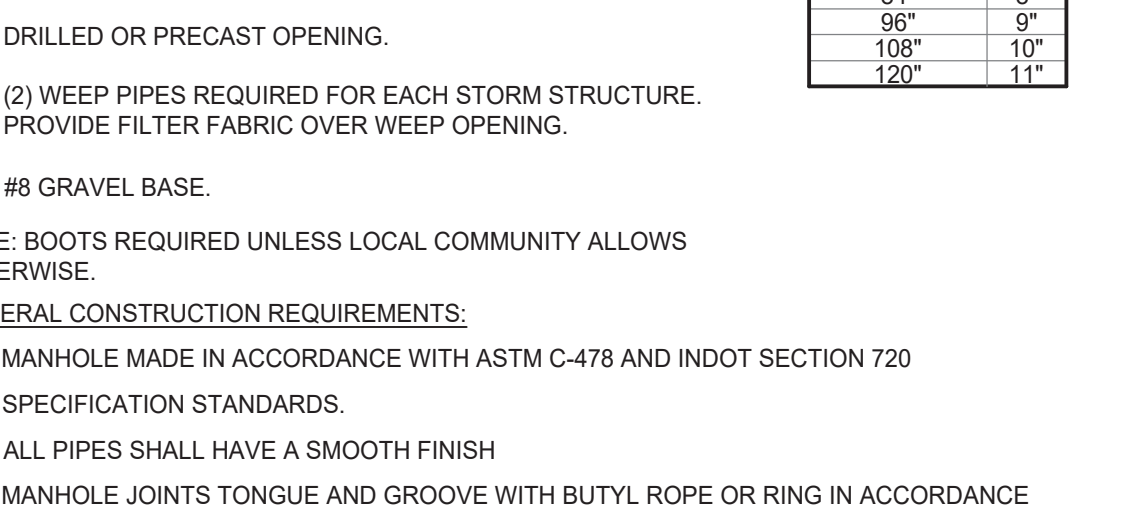
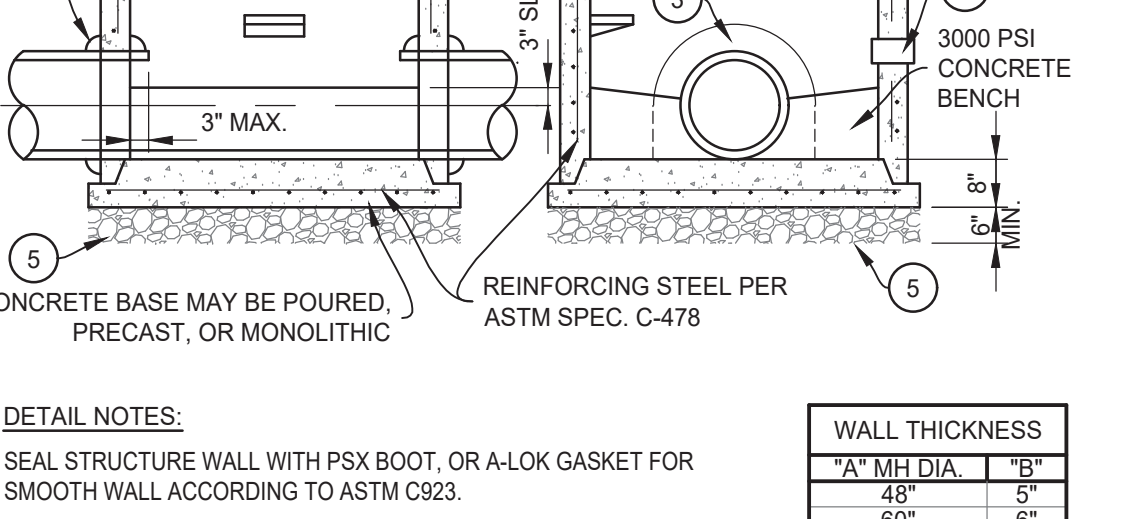
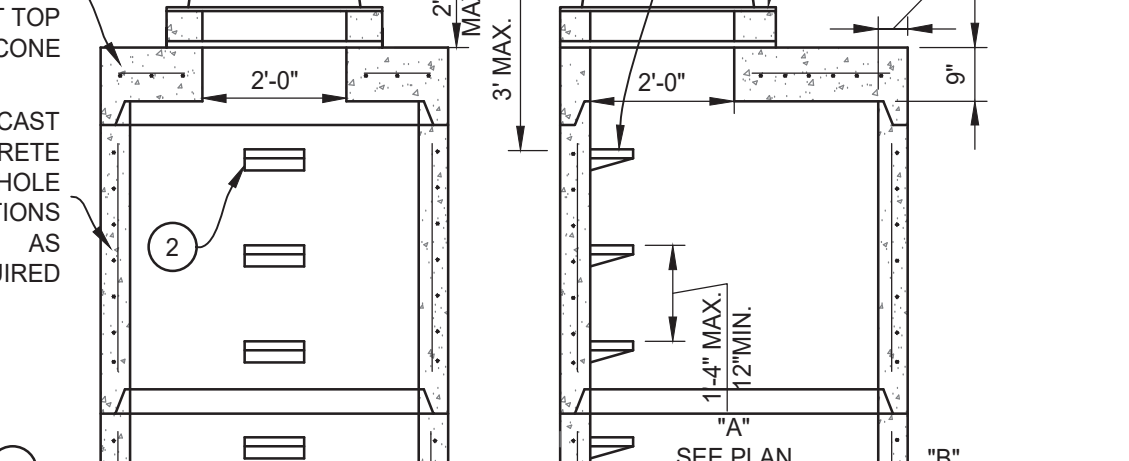
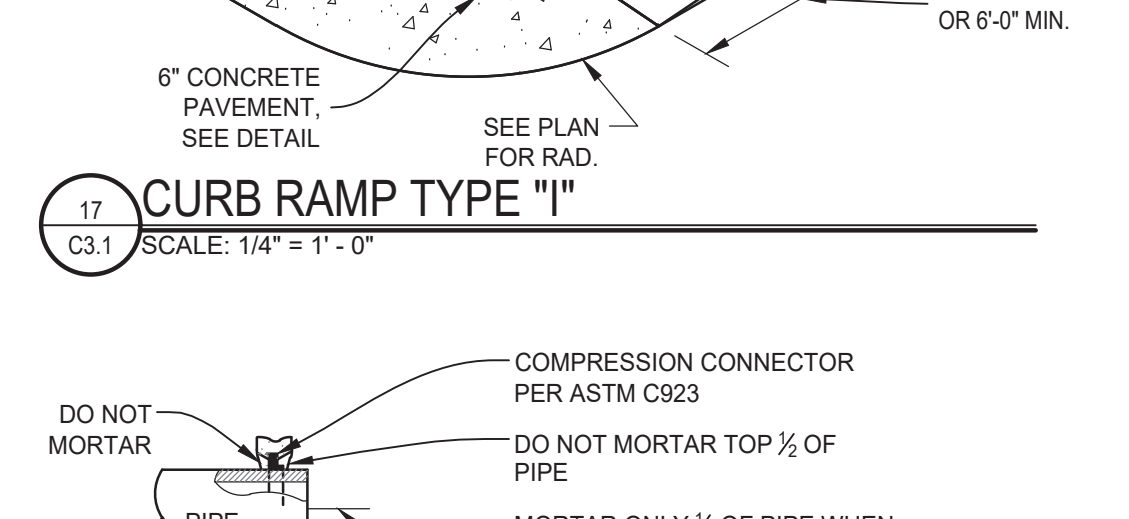
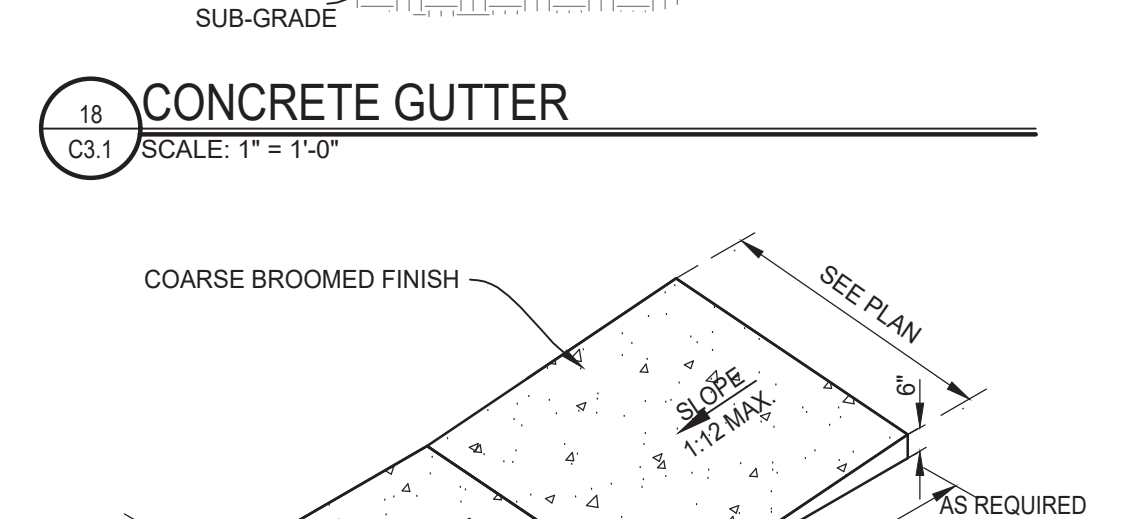
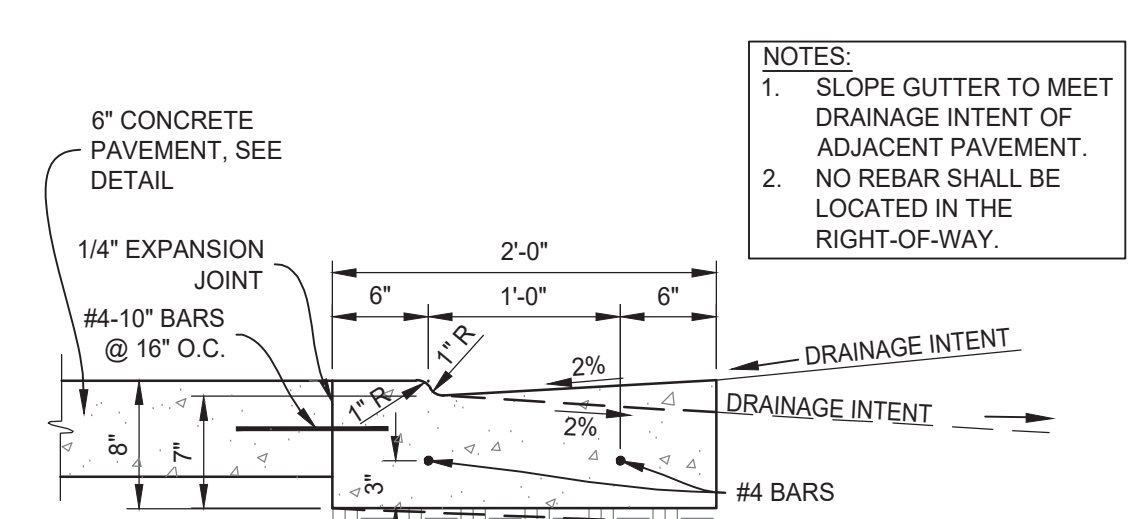
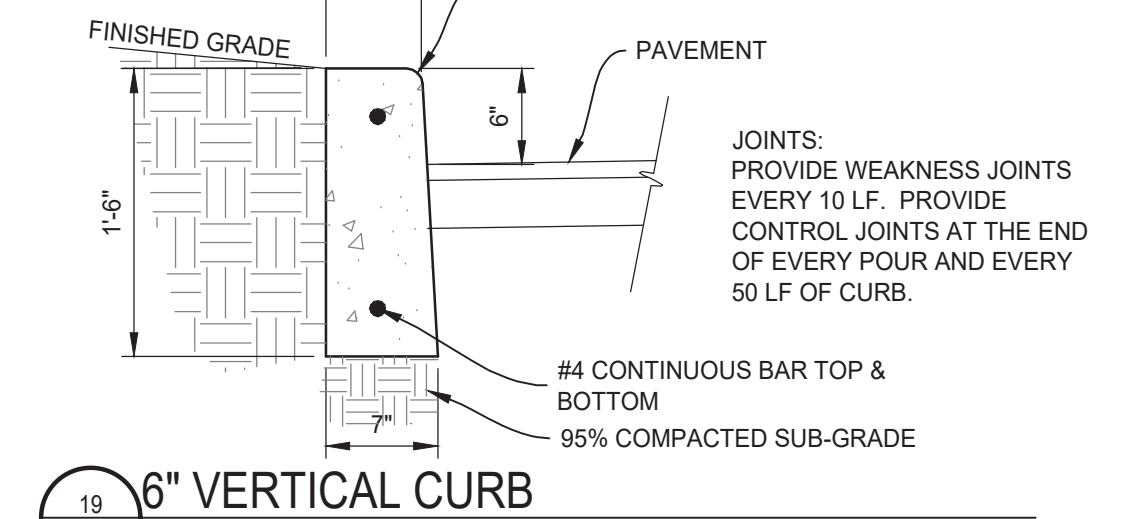
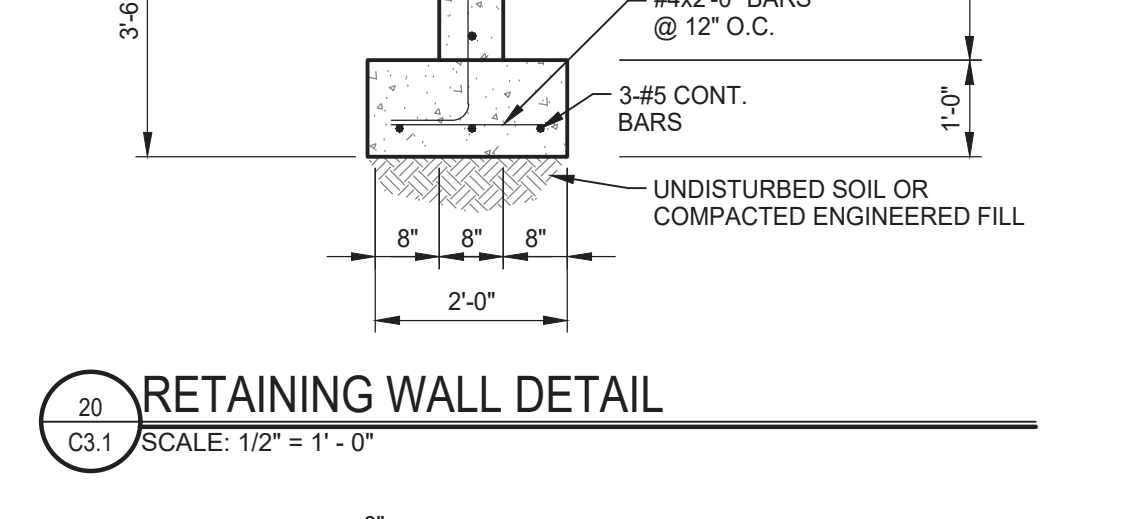
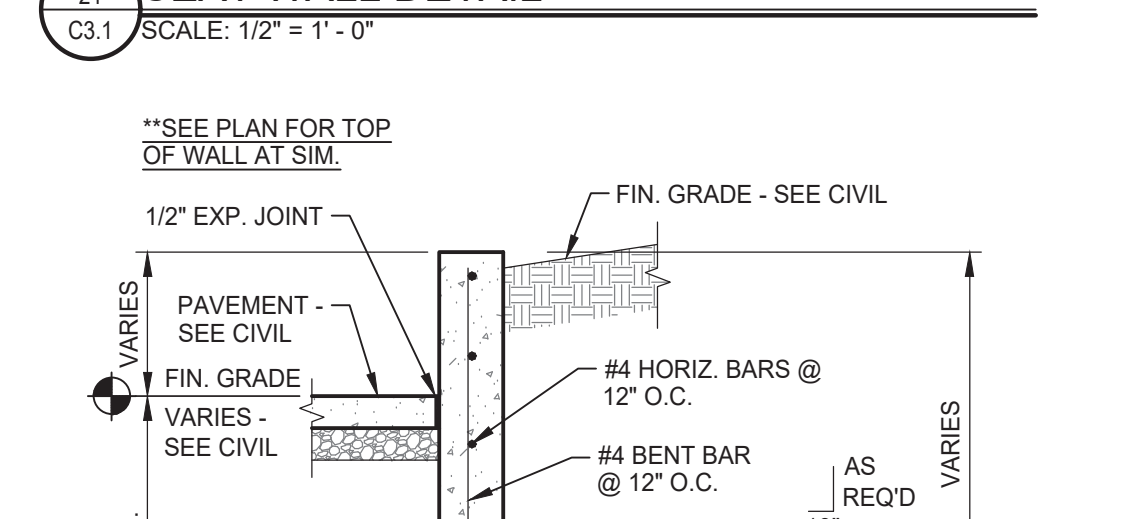
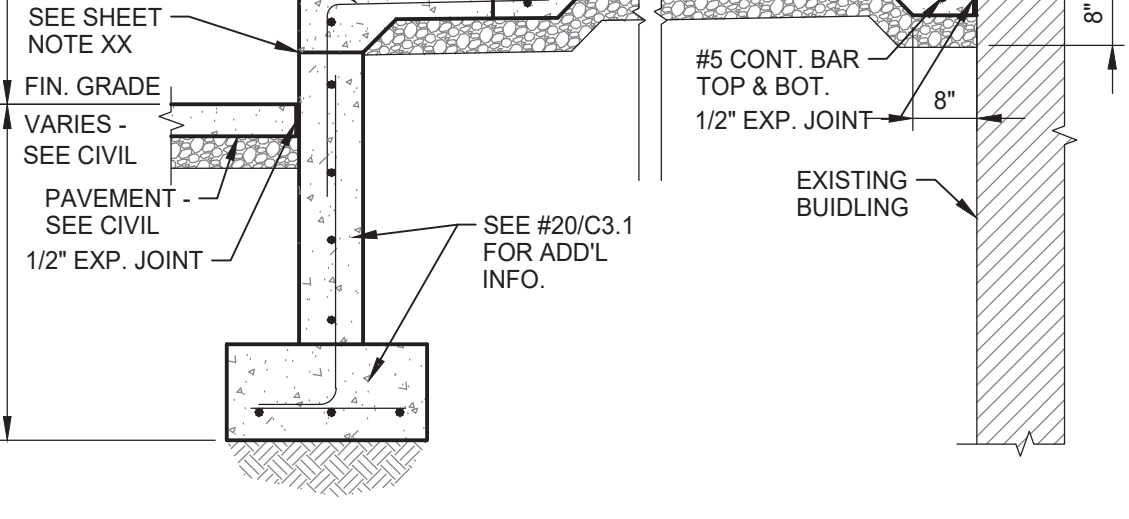
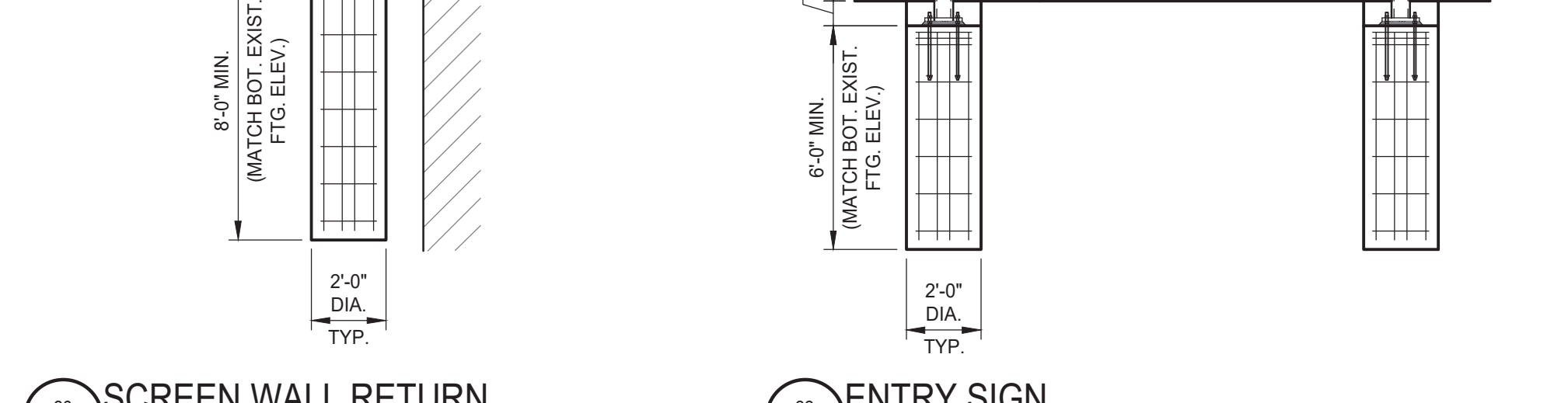
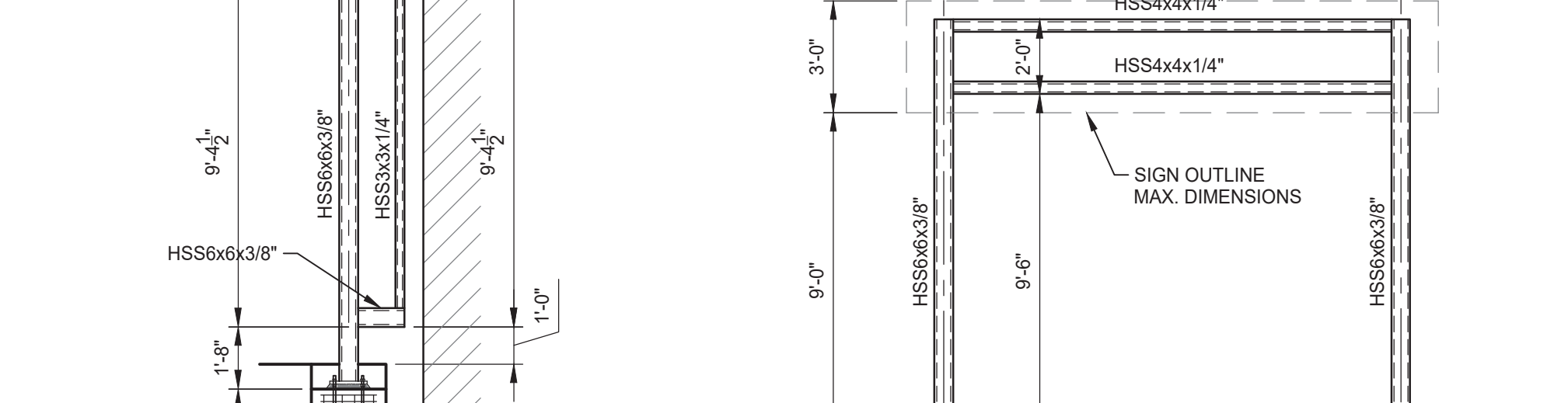
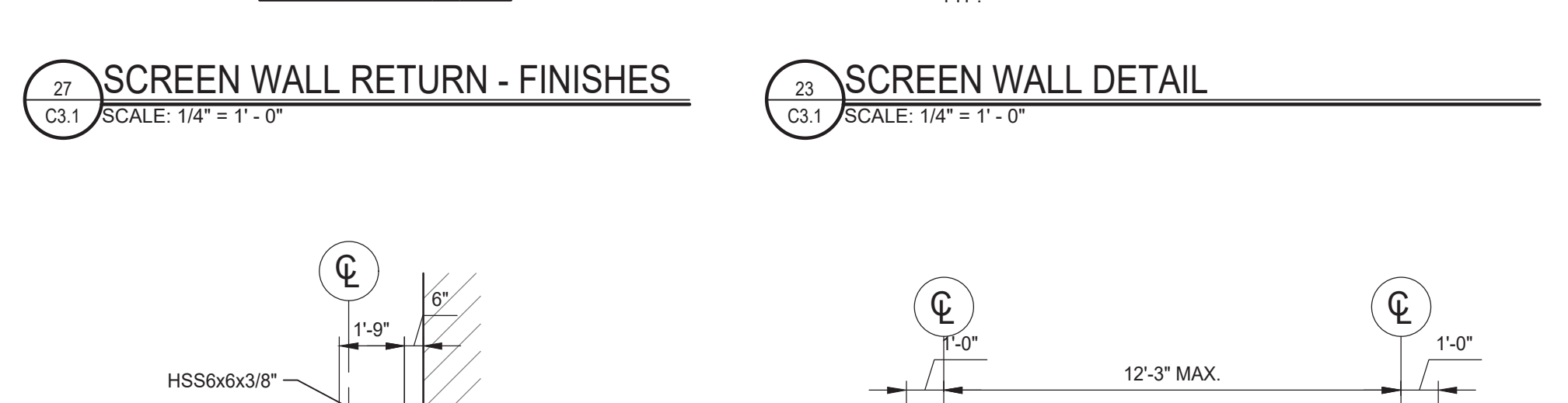
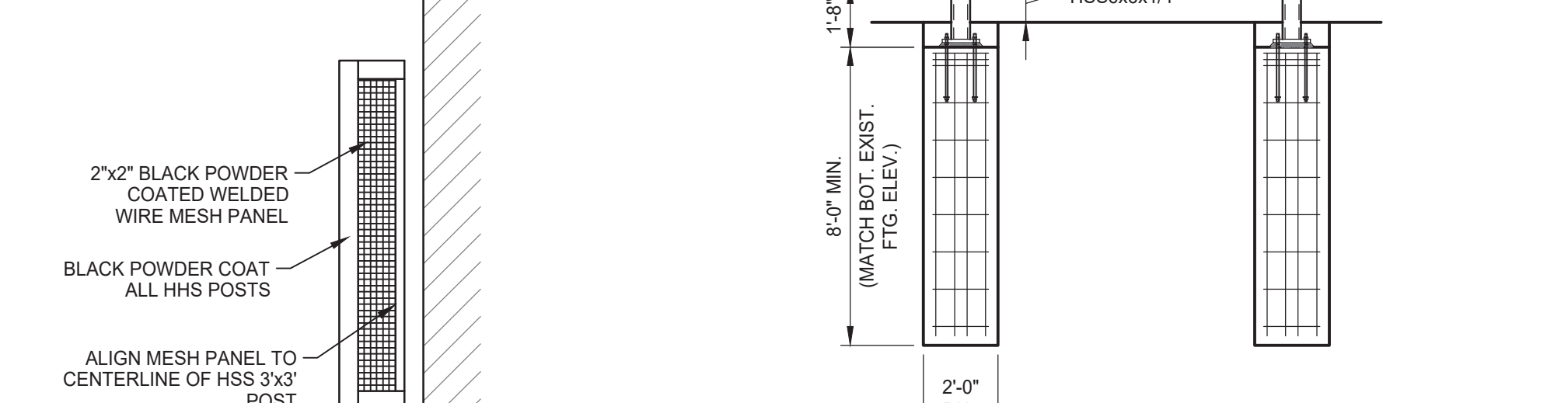
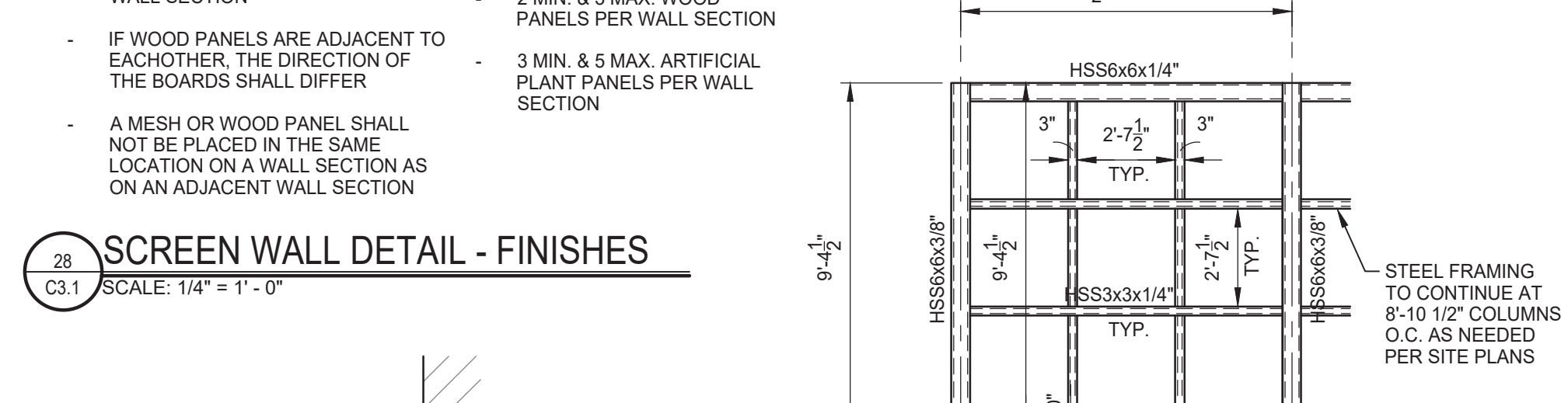
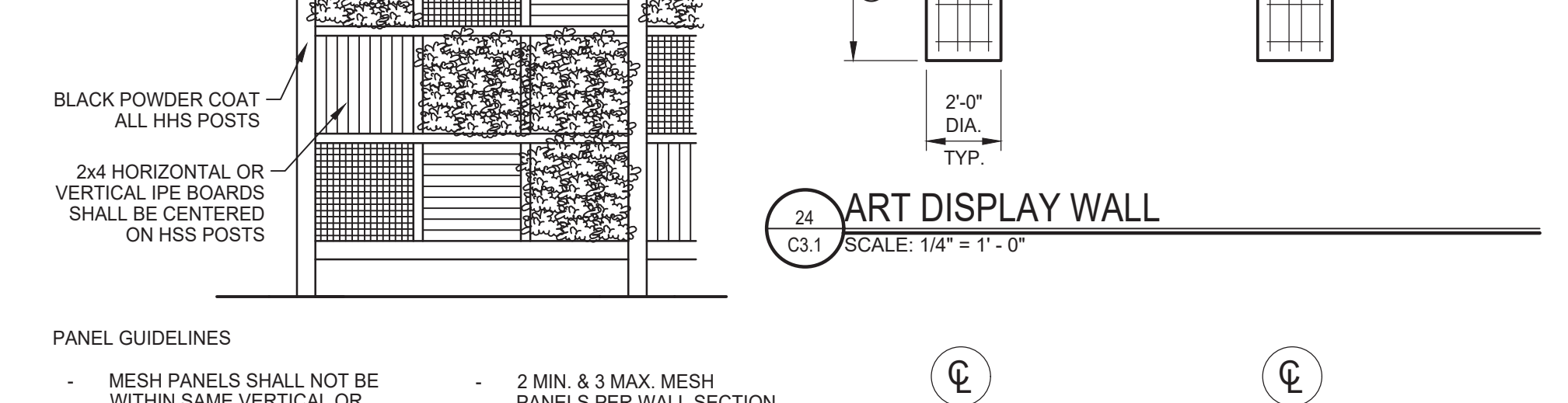
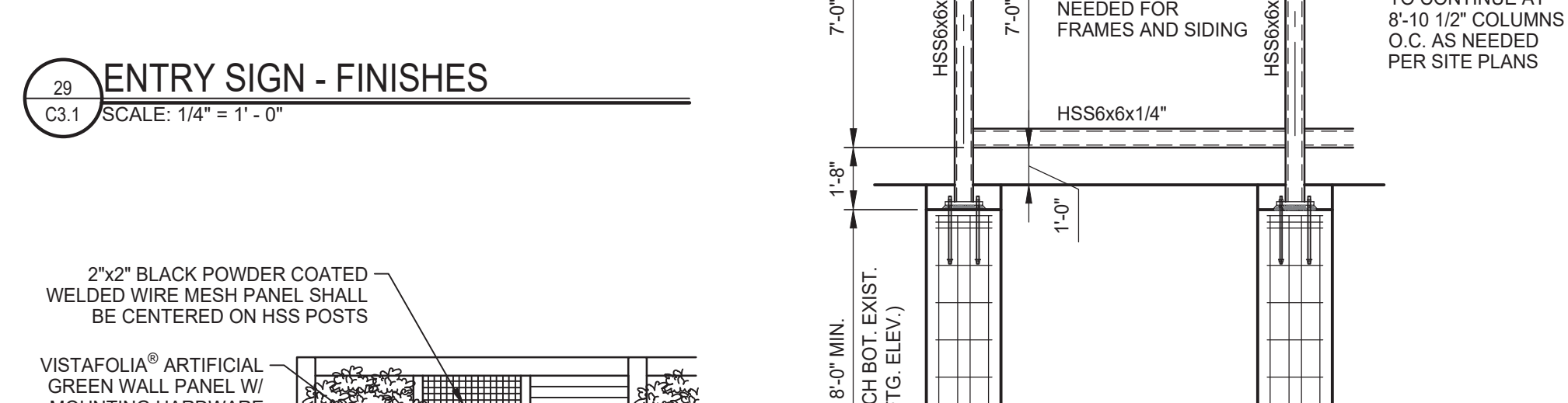
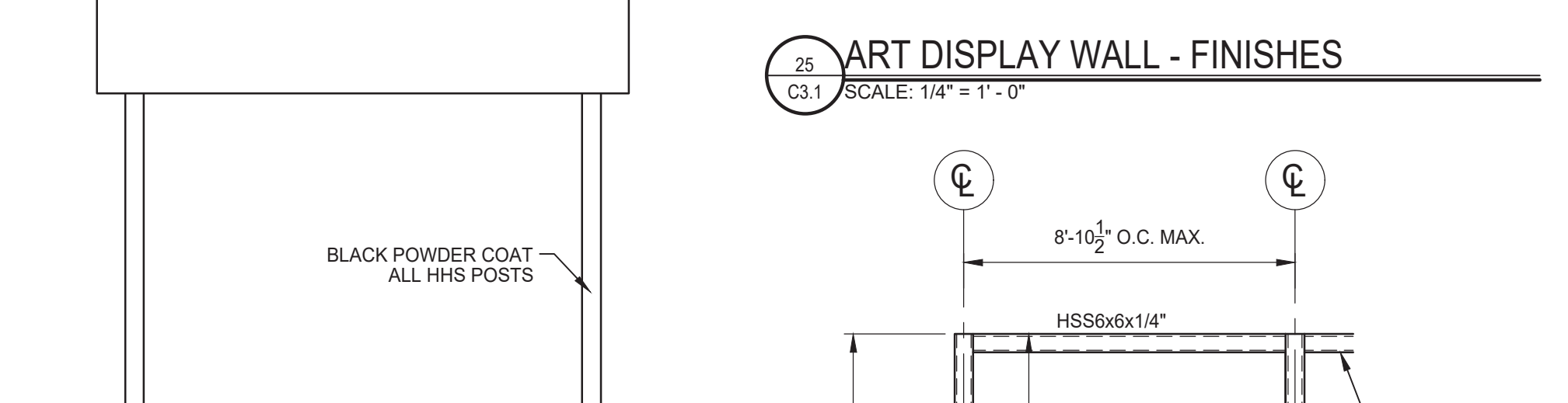
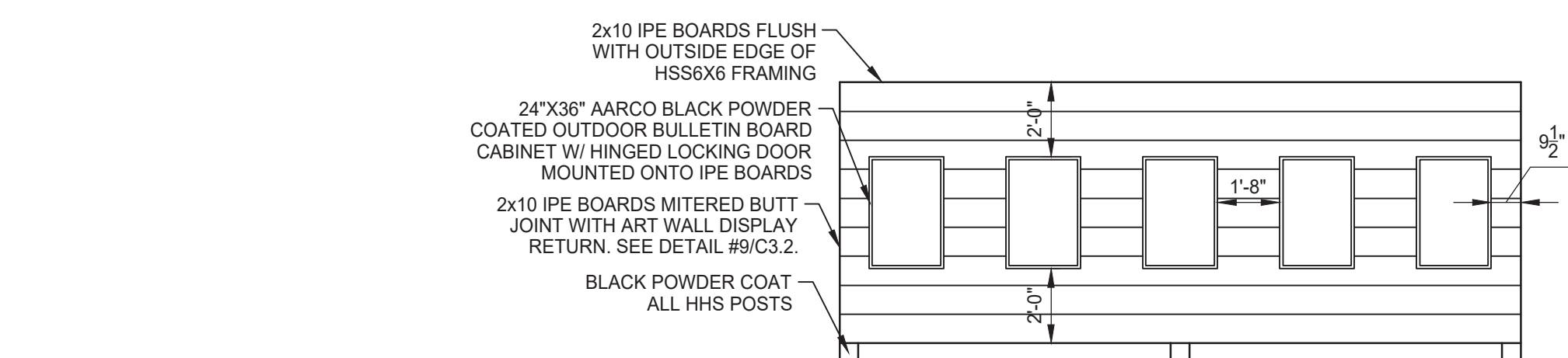
NOTE: ALL ELEVATIONS ARE TO TOP OF PAVEMENT OR LAWN UNLESS NOTED OTHERWISE.

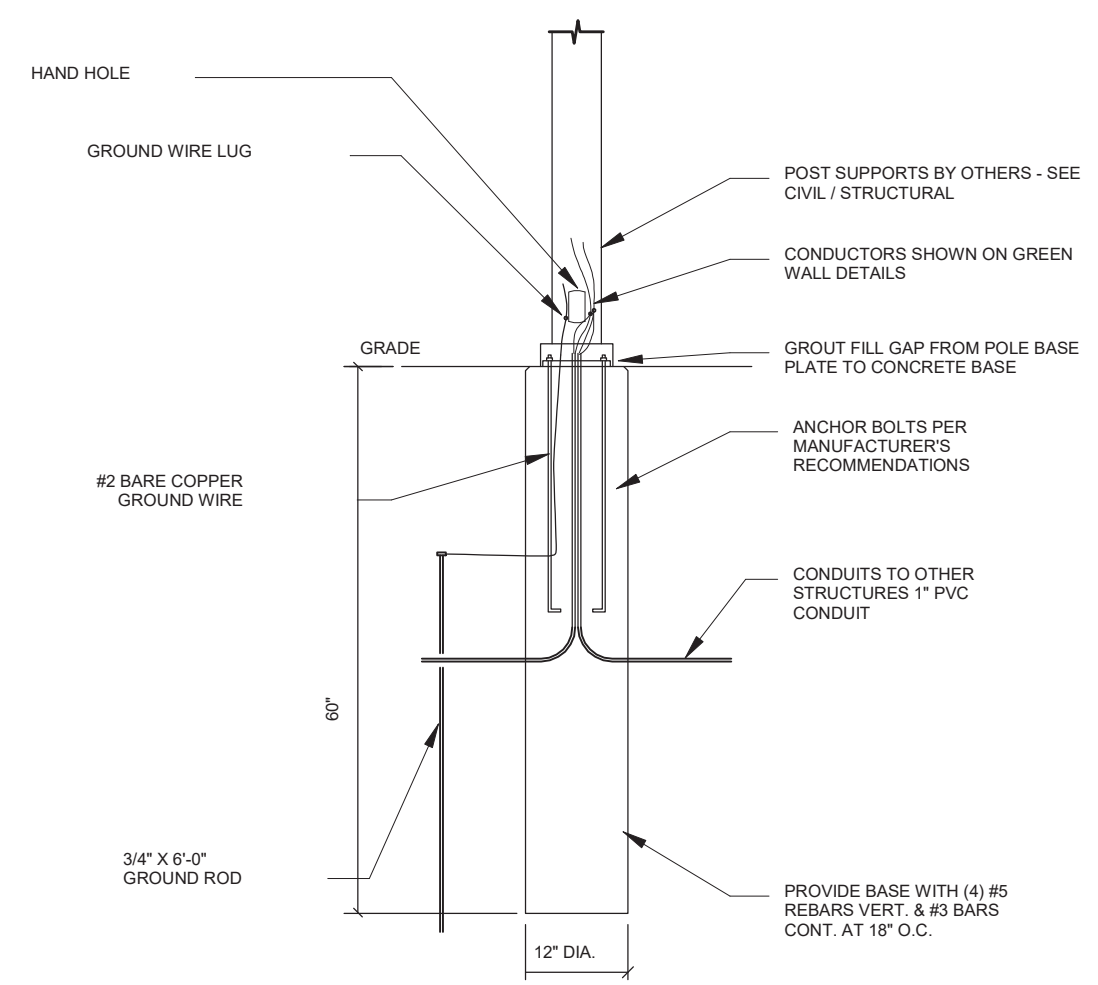


SITE GRADING PLAN - ALLEY 5
SCALE: 1" = 10'
NORTH



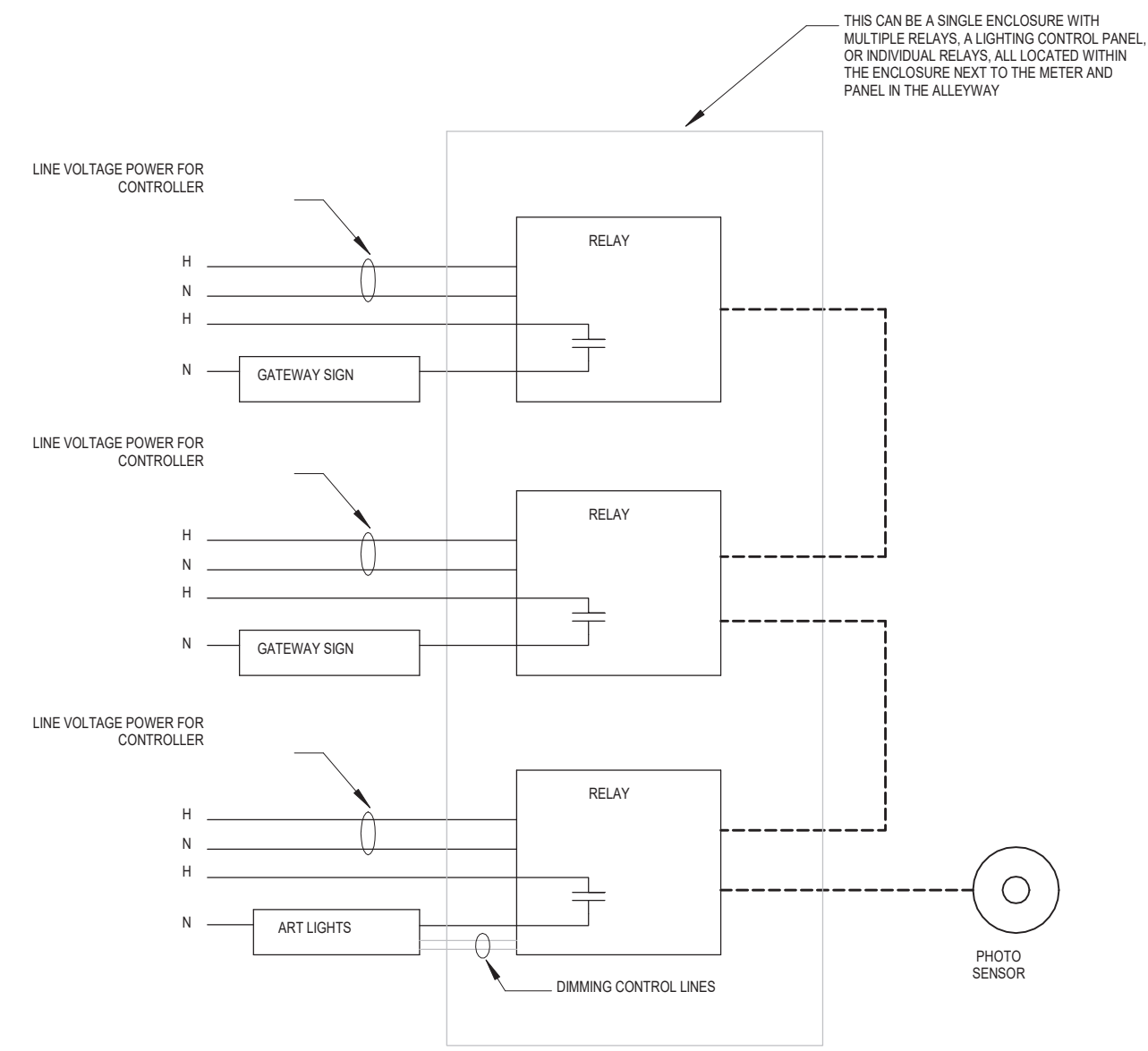
SITE UTILITY PLAN - ALLEY 5
SCALE: 1" = 10'
NORTH





5 POST BASE FOR GREEN WALLS / ART WALLS

NTS

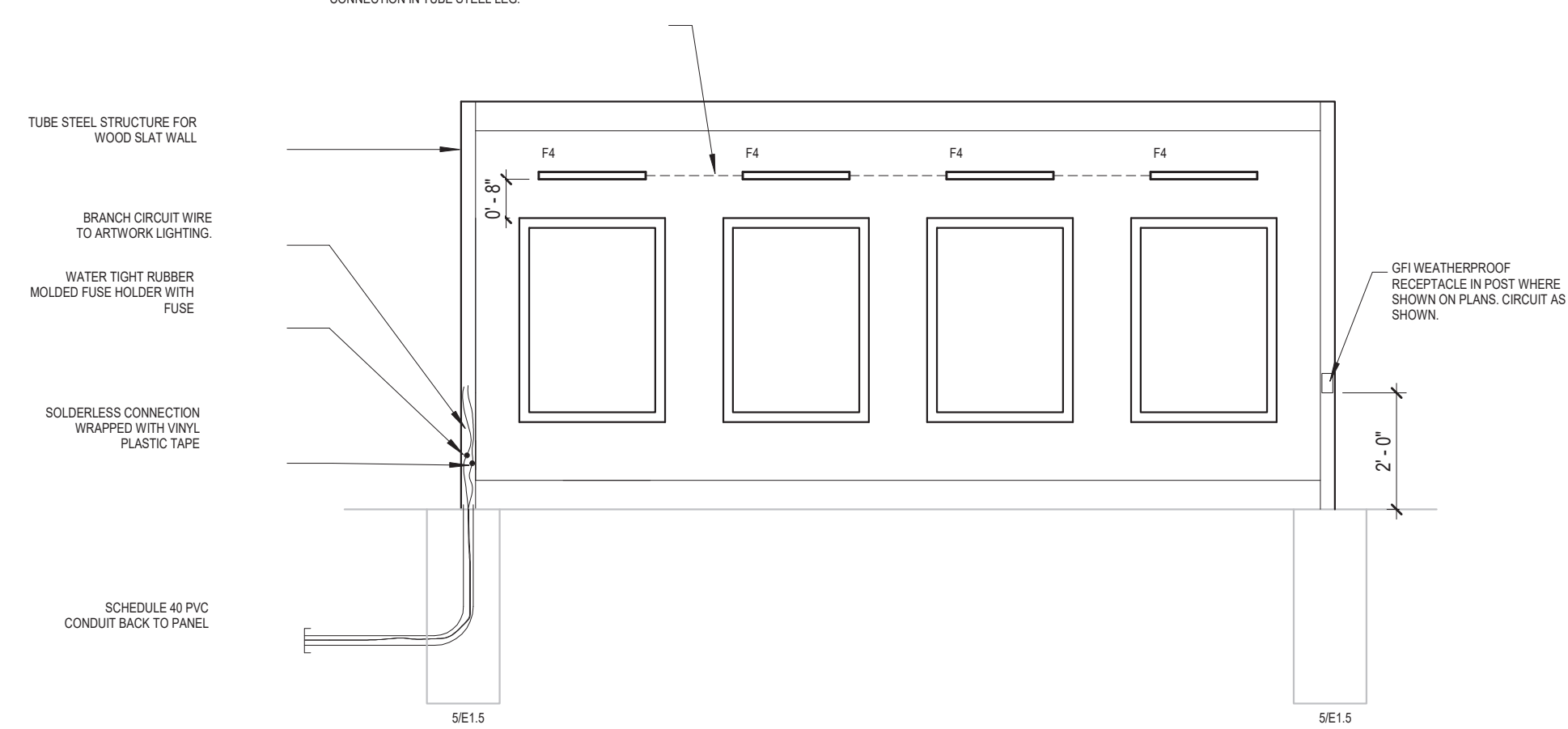


- NOTES:**
1. LIGHTING CONTROL SYSTEM SHALL HAVE ASTRONOMICAL TIME CLOCK FOR PROGRAMMING SCHEDULES / TIME OF DAY CONTROLS.
 2. DESIGN WITH:
 - A. GATEWAY SIGNS ON DUSK TO DAWN, WITH OPTION TO SCHEDULE ON/OFF/OVERRIDE ON CERTAIN DAYS OF THE WEEK / RELAYS, ETC.
 - B. WALL ART LIGHTS ON AT DUSK, REDUCE DOWN TO DIMMED OUTPUT DURING LATE NIGHT HOURS (E: 10:00 AM - DAWN).
 3. COORDINATE TIMES AND SCHEDULES FOR EACH ZONE WITH OWNER DURING PROGRAMMING.
 4. PROVIDE ALTERNATE PRICE TO ADD REMOTE ACCESS OPTION FOR CONTROLS TO BE MODIFIED FROM A REMOTE LOCATION.

4 ALLEY #5 LIGHTING CONTROLS

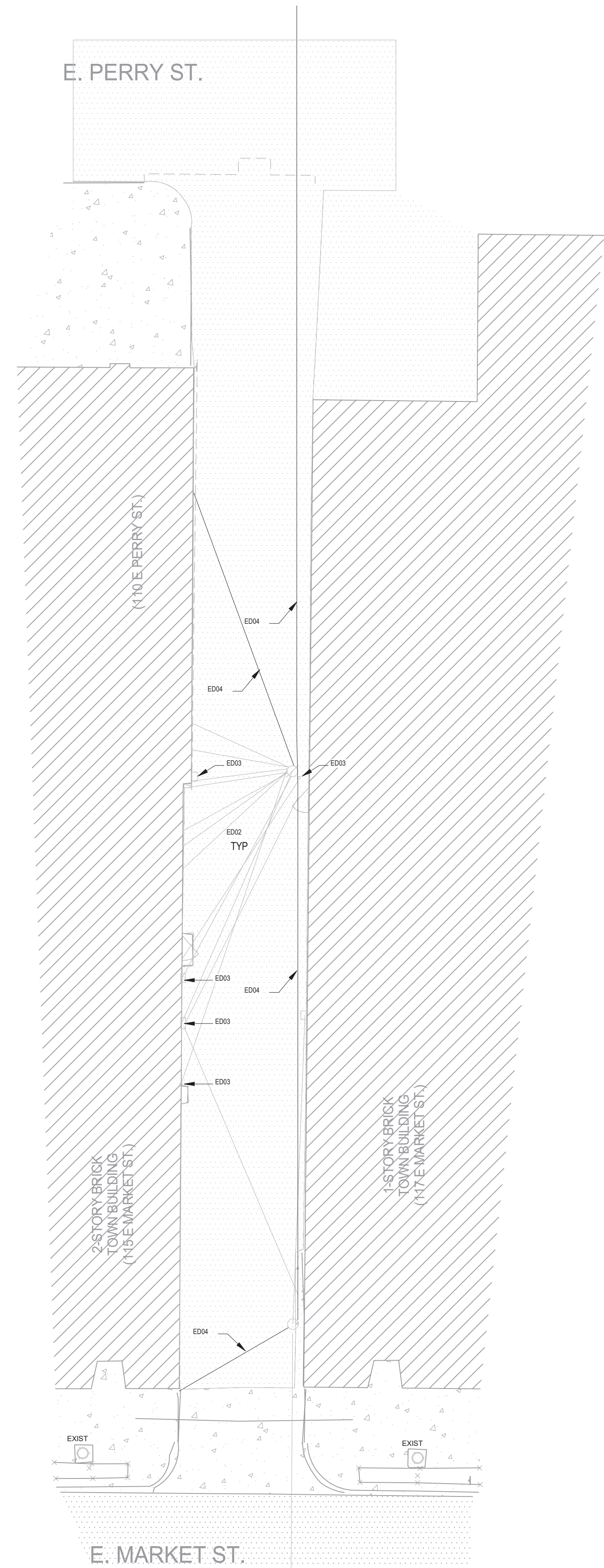
NTS

ROUTE CONDUIT CABLING FOR LIGHT FIXTURES BETWEEN INDICATED SPACES OF ART WALL. PROVIDE SINGLE W/HP CONNECTION FOR CONNECTION TO W/HP STEEL LUGS.



3 ART WALL LIGHTING DETAIL

NTS



2 ELECTRICAL DEMOLITION PLAN - ALLEY 5

SCALE: 1" = 10'-0"



LOAD CENTER: PNL 5

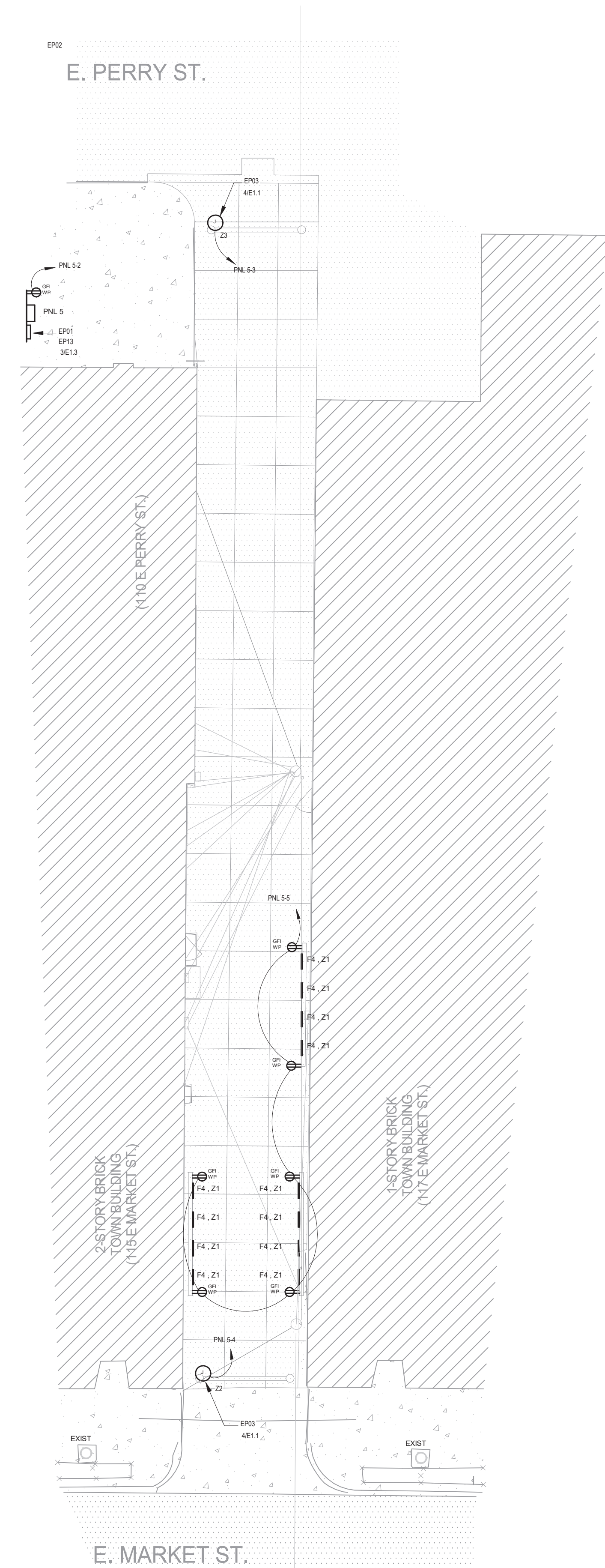
Volts: 120/240
Phases: 1
Wires: 3
Mains Type: MCB
Mains... 60 A

Mounting: SURFACE
Enclosure: TYPE 1

Notes:
LOCATE PANEL INSIDE ENCLOSURE PER SITE PANEL MOUNTING DETAILS. FEEDER SIZE: #6 CU. AWG, #10 G. IN 1" C.

CKT	Circuit Description	Rating	Poles	A	B	Poles	Rating	Circuit Description	CKT
1	LIGHTING	20 A	1	0.2...	0.2...	1	20 A	RCPT AT PANEL	2
3	GATEWAY SIGN	20 A	1	0.5...	0.5...	1	20 A	GATEWAY SIGN	4
5	RCPT	20 A	1	1.1...	0.0...	1	20 A	20A SPARE	6
7	20A SPARE	20 A	1		0.0...				8
9									10
11									12
Total Load:		1.45 kW					1.00 kW		
Total Amps:		12 A					8 A		

Load Classification	Connected Load	Demand Factor	Estimated...	Panel Totals
LIGHTING	0.19 kW	100.00%	0.19 kW	Total Conn. Load: 2.45 kW
POWER	1.00 kW	100.00%	1.00 kW	Total Est. Demand: 2.45 kW
RCPT	1.26 kW	100.00%	1.26 kW	Total Conn. Current: 10 A
				Total Est. Demand: 10 A



1 ELECTRICAL SITE PLAN - ALLEY 5

SCALE: 1" = 10'-0"



- GENERAL ELECTRICAL DEMOLITION NOTES**
1. EXISTING OVERHEAD UTILITIES TO REMAIN AND TO REMAIN OPERATIONAL. E.C. SHALL COORDINATE ALL OUTAGES REQUIRED WITH LOCAL UTILITIES AND OTHER TRADES.
 2. IN GENERAL, EXISTING ELECTRIC AND COMMUNICATIONS SERVICES TO BUILDINGS SHALL REMAIN AND SHALL REMAIN OPERATIONAL AT ALL TIMES. IF AN OUTAGE IS REQUIRED, COORDINATE WITH LOCAL UTILITY AND WITH BUILDING OWNER AND TENANT PRIOR TO SHUT DOWN.
 3. ELECTRICAL CONTRACTOR SHALL BE RESPONSIBLE FOR DISCONNECTING AND REMOVING POWER FEEDS TO ALL FIXED EQUIPMENT SHOWN TO BE REMOVED OR RELOCATED.
 4. REMOVE ALL ABANDONED CABLES AND CONDUCTORS ON FACE(S) OF BUILDINGS. CONFIRM SERVICE / CABLES / CONDUCTORS ARE NOT IN USE, AND REMOVE IN ENTIRETY.
 5. EXISTING STREETLIGHTS AND STREETLIGHT CIRCUITS ARE TO REMAIN AND SHALL REMAIN OPERATIONAL. VERIFY LOCATIONS OF ALL UNDERGROUND ELECTRICAL PRIOR TO ANY DEMOLITION AND/OR NEW CONSTRUCTION WORK.
- GENERAL ELECTRICAL NOTES**
1. THE SCOPE OF THE WORK COVERED BY THESE DRAWINGS AND SPECIFICATIONS INCLUDES LABOR, EQUIPMENT, AND MATERIALS FOR THE COMPLETE ELECTRICAL SYSTEM.
 2. THE ENTIRE ELECTRICAL INSTALLATION SHALL COMPLY WITH THE NEC AND ALL STATE AND LOCAL CODES.
 3. THE ENTIRE ELECTRICAL SYSTEM SHALL BE GROUNDED IN ACCORDANCE WITH THE NATIONAL ELECTRICAL CODE.
 4. EACH CONDUIT RUN SHALL HAVE A SEPARATE GREEN INSULATED GROUND WIRE.
 5. ALL BRANCH CIRCUITS AND FEEDERS SHALL HAVE SEPARATE NEUTRAL CONDUCTORS. SHARING OF NEUTRAL WIRES IS NOT ACCEPTABLE.
 6. PROVIDE NEW 4-RELAY LIGHTING CONTROL PANEL IN NEW SERVICE ENTRANCE CABINET FOR EACH ALLEY. RELAY PANEL SHALL TIE INTO LOCAL PHOTOCELL AT EACH LOCATION FOR DUSK TO DAWN CONTROL AND SHALL HAVE ASTRONOMICAL TIME CLOCK FOR TIME OF DAY SCHEDULING.
 7. MINIMUM CONDUIT DEPTH SHALL BE 36"

- ELECTRICAL DEMOLITION KEYNOTES**
- | | |
|------|--|
| ED01 | EXISTING OVERHEAD COMMUNICATIONS LINES |
| ED02 | EXISTING OVERHEAD COMMUNICATIONS LINES |
| ED03 | EXISTING COMMUNICATIONS SERVICE DROPS INTO BUILDING. |
| ED04 | EXISTING OVERHEAD ELECTRIC UTILITY LINES. |

- POWER PLAN KEYNOTES**
- | | |
|------|--|
| EP01 | NEW ELECTRICAL SERVICE CABINET AND UTILITY METER ON UNISTRUT SUPPORT. REFER TO DETAIL FOR MORE INFORMATION. |
| EP02 | ROUTE NEW ELECTRICAL SERVICE FROM EXISTING UTILITY POLE ON NORTH SIDE OF PERRY STREET. OVERHEAD DROP TO WEATHERHEAD AND CONDUIT AT NEW SERVICE LOCATION. COORDINATE WITH BLUFFTON ELECTRIC DEPARTMENT FOR ADDITIONAL INFORMATION. |
| EP03 | PROVIDE POWER TO GATEWAY SIGN FOR INTEGRAL SIGN LIGHTING. REFER TO DETAIL FOR MORE INFORMATION. ALSO PROVIDE RELAY / ZONE IN LIGHTING CONTROLS FOR THIS ALLEY THAT CONTROL THE GATEWAY SIGN LIGHTING ON A TIME OF DAY + PHOTOCELL BASIS. |
| EP13 | PROVIDE SMALL RELAY PANEL / MULTIPLE RELAYS FOR ON/OFF/DIMMING CONTROL OF LIGHT FIXTURES. RELAYS / CONTROL PANEL SHALL BE CAPABLE OF INTERFACING WITH PHOTOCELL MOUNTED ON ENCLOSURE AND TIME OF DAY SCHEDULING. |



NOT FOR CONSTRUCTION

The concepts, ideas, designs, plans and details shown on this document are the sole property of Engineering Resources, Inc. and were created, developed, and presented for use on this specific project. None of the concepts, ideas, designs, plans, or details shall be used, or dissemination of any data herein may be made without the written permission of Engineering Resources, Inc.

Bluffton NOW
Downtown Pathways Project
Bluffton, Indiana, 46714



ERI PROJECT NUMBER: 5411
ISSUE DATE: 05-16-2023

PROGRESS SET

REVISIONS		
NO.	DATE	DESCRIPTION

ELECTRICAL SITE PLANS - ALLEY #5

E1.5